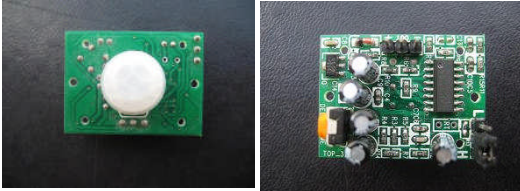


PIR Motion Detector Module



Motion detector module uses a motion detector IC and PCB mounted Fresnel lens.

Item:BS17 00

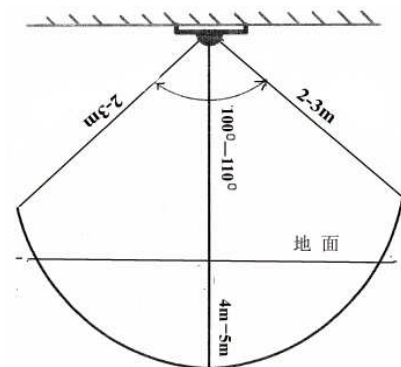
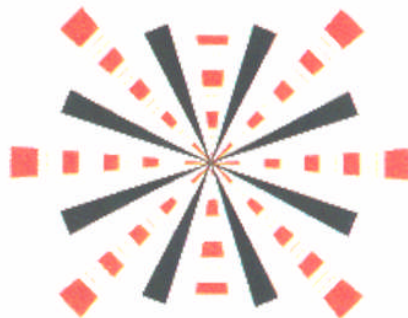
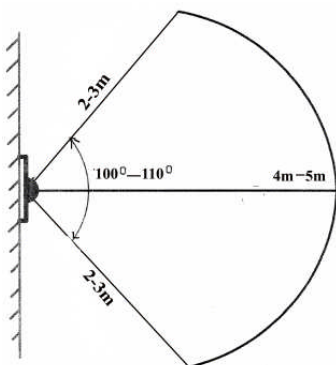
General

BS1700 is a pyroelectric sensor module developed for human body detection. A PIR detector combined with a fresnel lens are mounted on a compact size PCB together with an analog IC, , and limited components to form the module. High level output of variable width is provided.

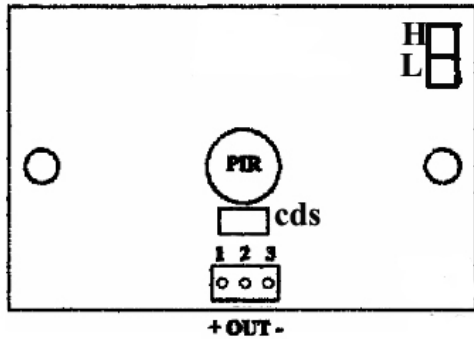
Features and Electrical Specification

- Compact size (24 x 32 mm)
- Supply current: DC5V-20V(can design DC3V-24V)
- Current drain :< 50uA
- Voltage Output: High/Low level signal : 3.3V
(Other choice: Open-Collector Output)
- TTL output
- High sensitivity
- Delay time: 5s-18 minute(as customer requirement)
- Operation Temperature: -15°C -70 °C
- Infrared sensor: dual element, low noise, high sensitivity
- Light sensor: CdS photocell (can be add as customer requirement)

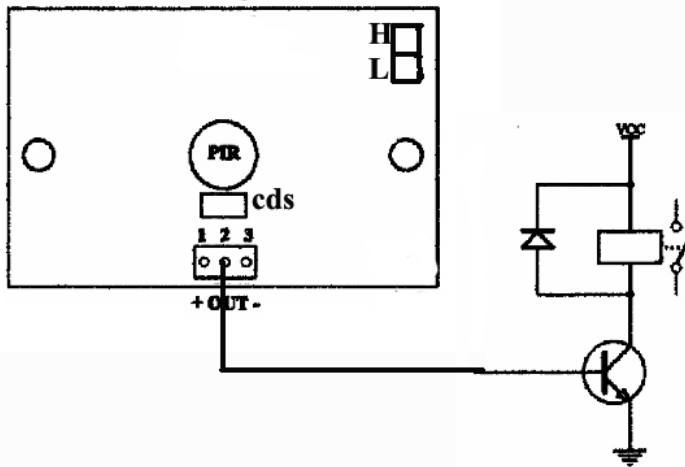
Lens information



Application Note



1. Power anode
 2. Output: High level signal
 3. Power cathode
- H: Can be spring repeatedly
L: Can not be spring repeatedly
CDS: Photocell



Note

Due to the high sensitivity of PIR sensor device, it is not recommended to use the module in the following or similar condition.

- A) in rapid environmental changes
- B) in strong shock or vibration
- C) in a place where there are obstructing material (eg. glass) through which IR cannot pass within detection area.
- D) exposed to direct sun light
- E) exposed to direct wind from a heater or air condition