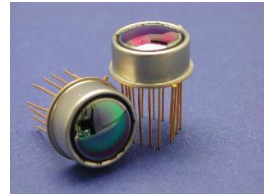
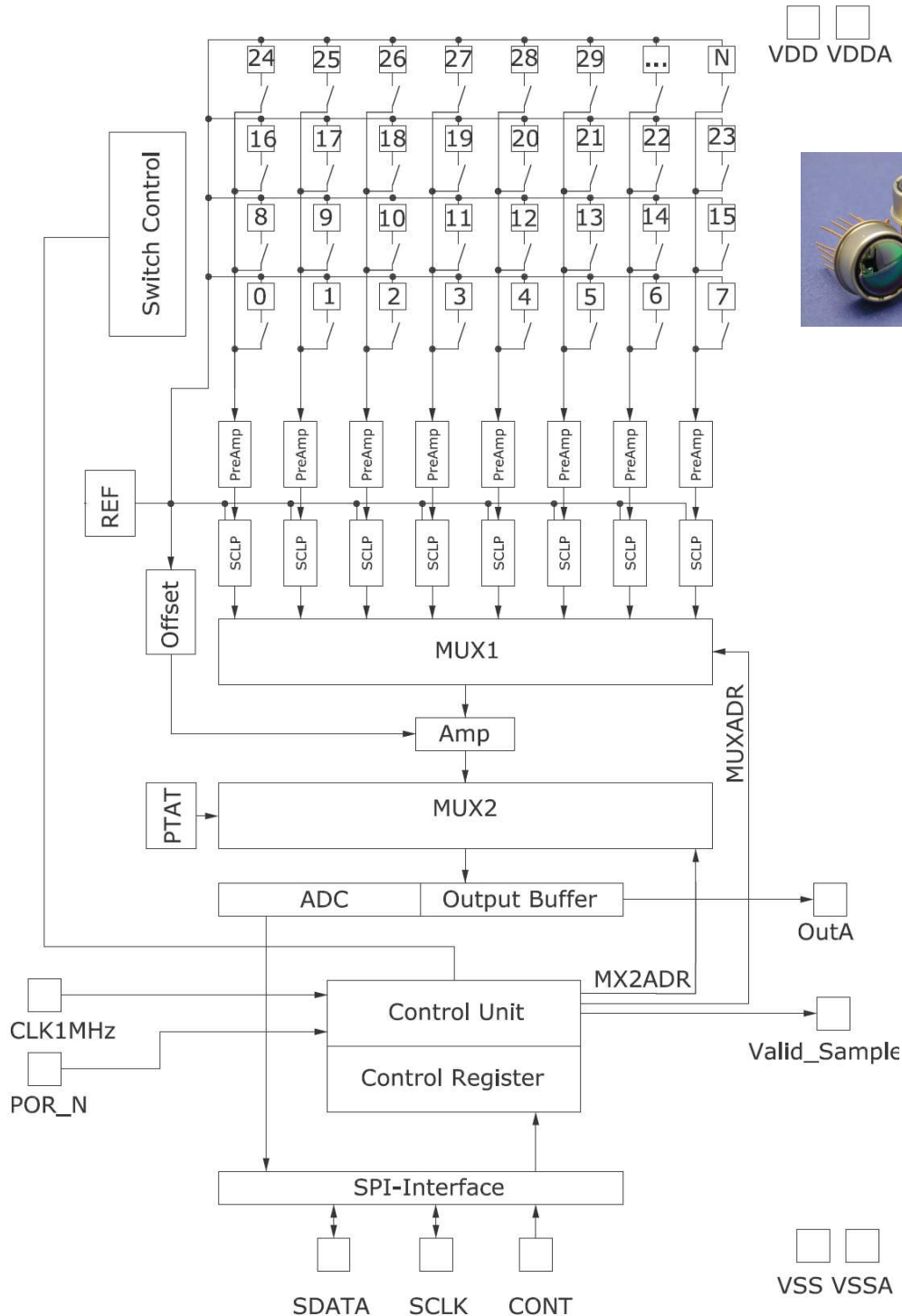


Specifications for Thermopilearrays HTPA8x8, HTPA16x16 and HTPA32x31

Rev.12: 2010.08.03 Fg



Principal Schematic for HTPA16x16:



HEIMANN Sensor GmbH
Grenzstr. 22
D-01109 Dresden / Germany

Contact / Customer Support
Phone 49 (0) 6123 60 50 30
Fax 49 (0) 6123 60 50 39

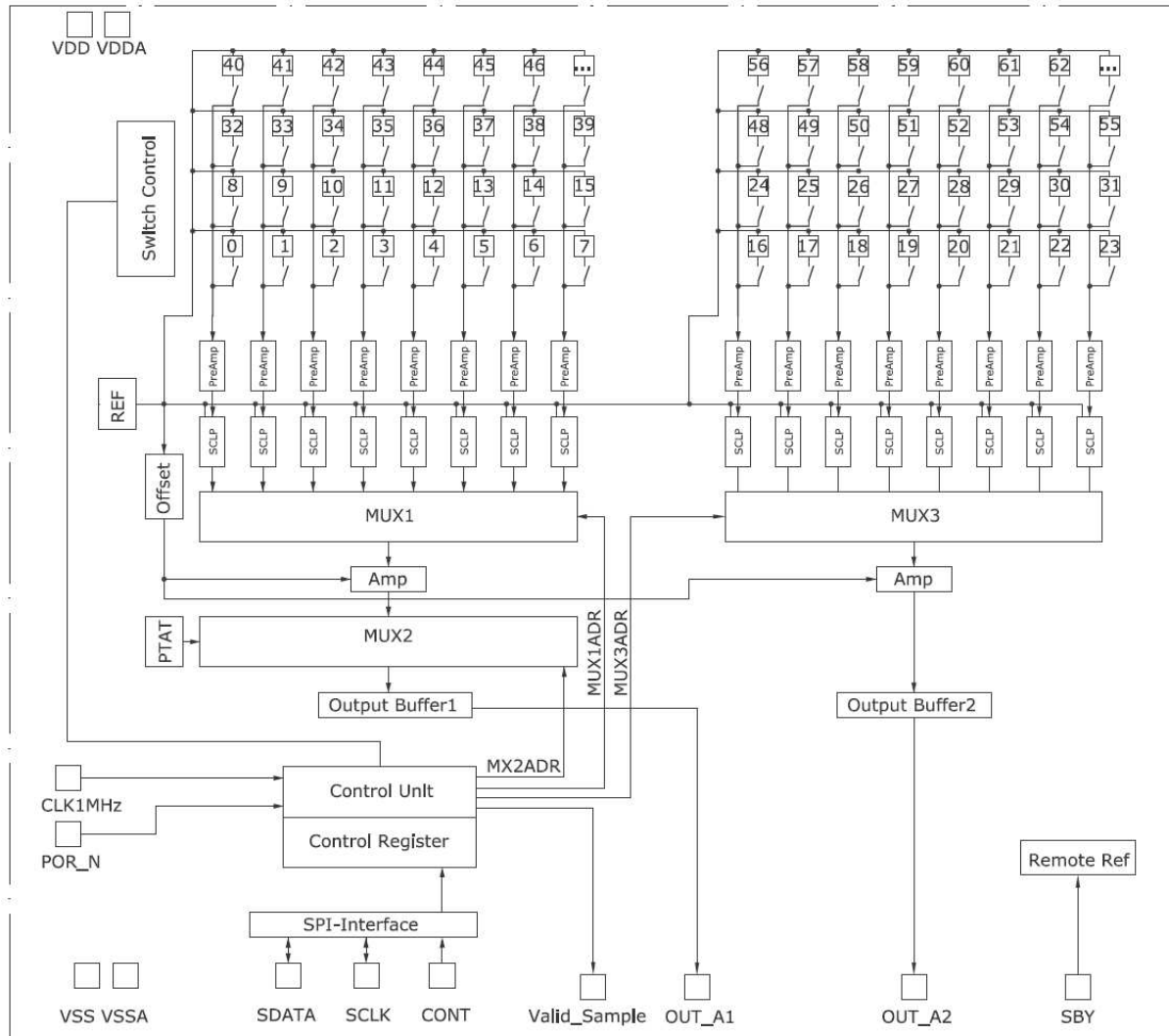
Internet
www.heimanssensor.com
mail: info@heimanssensor.com

Specifications for Thermopilearrays HTPA8x8, HTPA16x16 and HTPA32x31

Rev.12: 2010.08.03 Fg



Principal Schematic for HTPA32x31:



HEIMANN Sensor GmbH
Grenzstr. 22
D-01109 Dresden / Germany

Contact / Customer Support
Phone 49 (0) 6123 60 50 30
Fax 49 (0) 6123 60 50 39

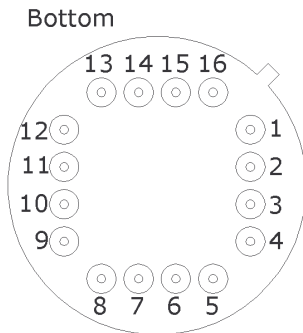
Internet
www.heimannsensor.com
mail: info@heimannsensor.com

Specifications for Thermopilearrays HTPA8x8, HTPA16x16 and HTPA32x31

Rev.12: 2010.08.03 Fg



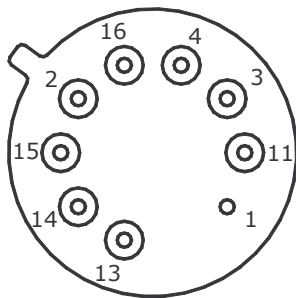
Pin Assignment in TO8 for 8x8:



Connect all reference voltages via 100 nF capacitors to VSS.

Pin Assignment in TO39 for 8x8:

Bottom



Connect all reference voltages via 100 nF capacitors to VSS.

Pin Assignment 8x8			
Pin	Name	Description	Type
1	VSS	Negative power supply voltage	Power
2	CONT	Control Pin for SPI	Digital Input
3	OUT_A	Analog Output	Analog Output
4	VCM_C	Common mode voltage	Reference Voltage*
5	VCM_OUT	Common mode voltage	Reference Voltage*
6	VREF_N	Negative reference voltage for ADC	Reference Voltage*
7	VREF_P	Positive reference voltage for ADC	Reference Voltage*
8	VREF_1225V	1.225V reference voltage	Reference Voltage*
9	AGND	Analog ground for ADC	Reference Voltage*
10	VDDA	Positive power supply voltage	Power
11	VDD	Positive power supply voltage	Power
12	POR_N	Power on reset, negatived	Digital Input
13	CLK_1MHZ	Master clock	Digital Input
14	VSAM	Valid sample	Digital Output
15	SCLK_IO	Clock input/output for SPI	Digital Input/Output
16	DATA_IO	Data input/output for SPI	Digital Input/Output

*) Connect via 100 nF to VSS

HEIMANN Sensor GmbH
Grenzstr. 22
D-01109 Dresden / Germany

Contact / Customer Support
Phone 49 (0) 6123 60 50 30
Fax 49 (0) 6123 60 50 39

Internet
www.heimanssensor.com
mail: info@heimanssensor.com

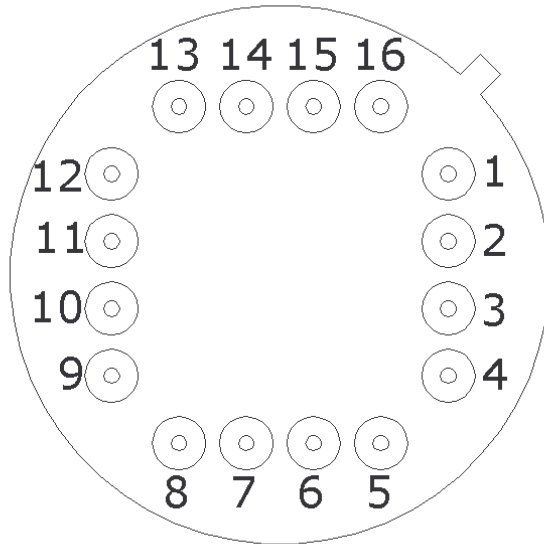
Specifications for Thermopilearrays HTPA8x8, HTPA16x16 and HTPA32x31

Rev.12: 2010.08.03 Fg



Pin Assignment in TO8 for 16x16:

Bottom



Connect all reference voltages via
100 nF capacitors to VSS.

Pin Assignment 16x16			
Pin	Name	Description	Type
1	VREF_N	negative reference voltage for ADC	Reference Voltage*
2	VREF_P	positive reference voltage for ADC	Reference Voltage*
3	AGND	analog ground for ADC	Reference Voltage*
4	OUT_A	Analog Output	Analog Output
5	VCM_OUT	common mode voltage	Reference Voltage*
6	VCM_C	common mode voltage	Reference Voltage*
7	VREF_1225V	1.225V reference voltage	Reference Voltage*
8	VDD/VDDA	positive power supply voltage	Power
9	VSAM	valid sample	Digital Output
10	SCLK_IO	clock input/output for SPI	Digital Input/Output
11	CLK_1MHZ	master clock	Digital Input
12	POR_N	power on reset, negated	Digital Input
13	SBY	Standby	Digital Input
14	VSS	negative power supply voltage	Power
15	DATA_IO	data input/output for SPI	Digital Input/Output
16	CONT	Control Pin for SPI	Digital Input

*) Connect via 100 nF to VSS

HEIMANN Sensor GmbH
Grenzstr. 22
D-01109 Dresden / Germany

Contact / Customer Support
Phone 49 (0) 6123 60 50 30
Fax 49 (0) 6123 60 50 39

Internet
www.heimanssensor.com
mail: info@heimanssensor.com

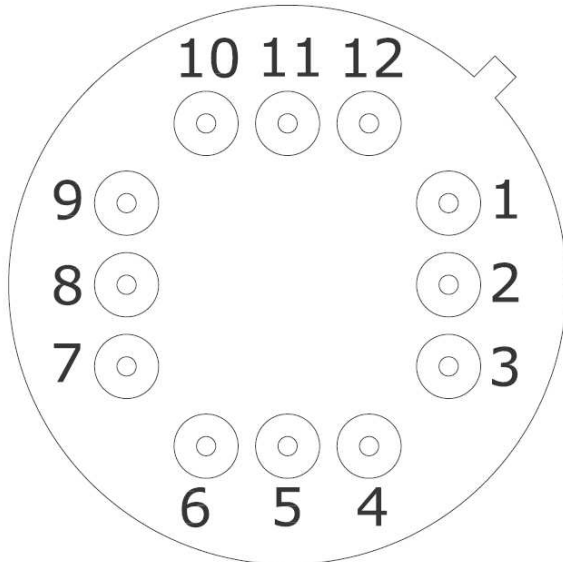
Specifications for Thermopilearrays HTPA8x8, HTPA16x16 and HTPA32x31

Rev.12: 2010.08.03 Fg



Pin Assignment in TO8 for 32x31:

Bottom



Connect all reference voltages via 100 nF capacitors to VSS.

Pin Assignment 32x31			
Pin	Name	Description	Type
1	CLK_1MHZ	master clock	Digital Input
2	SCLK_IO	clock input/output for SPI	Digital Input/Output **
3	SBY	Standby	Digital Input***
4	VSAM	valid sample	Digital Output
5	DATA_IO	data input/output for SPI	Digital Input/Output **
6	OUT_A2	Analog Output	Analog Output
7	VCM_C	common mode voltage	Reference Voltage*
8	VREF_1225V	1.225V reference voltage	Reference Voltage*
9	OUT_A1	Analog Output	Analog Output
10	VSS	negative power supply voltage	Power
11	VDD	positive power supply voltage	Power
12	CONT	Control Pin for SPI	Digital Input

*) Connect via 100 nF to VSS

**) The HTPA32x31 has no ADC, but the valid sample cycle number is delivered.

***) Connect to VSS or NC for internal reference voltages. Connect to VDD if VREF_1225V and VCM_C are applied from external. See “Application Note HTPA” for details.

HEIMANN Sensor GmbH
Grenzstr. 22
D-01109 Dresden / Germany

Contact / Customer Support
Phone 49 (0) 6123 60 50 30
Fax 49 (0) 6123 60 50 39

Internet
www.heimansensor.com
mail: info@heimansensor.com

Specifications for Thermopilearrays HTPA8x8, HTPA16x16 and HTPA32x31

Rev.12: 2010.08.03 Fg

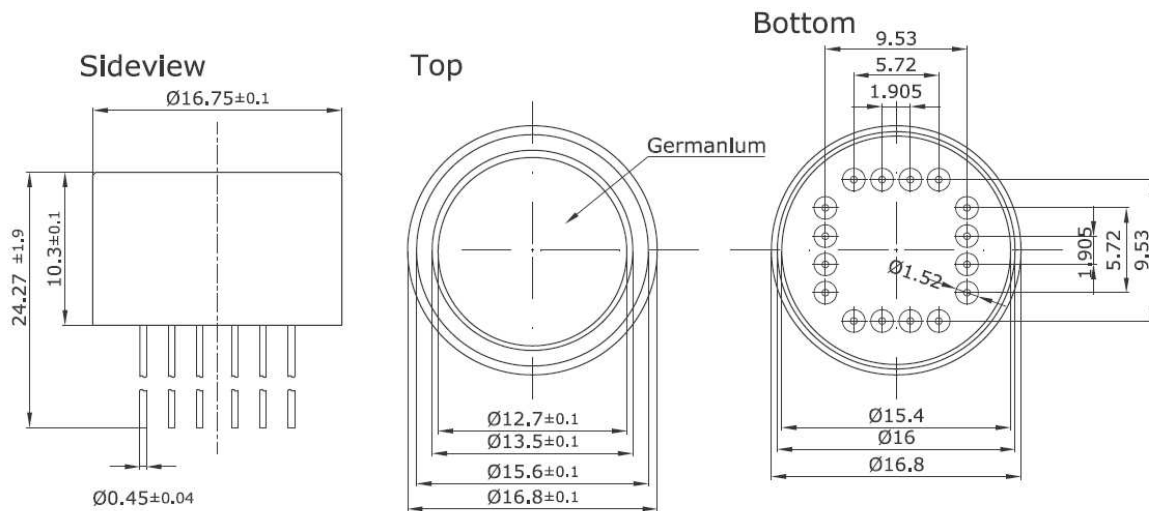


Possible Lens / Array type combinations:

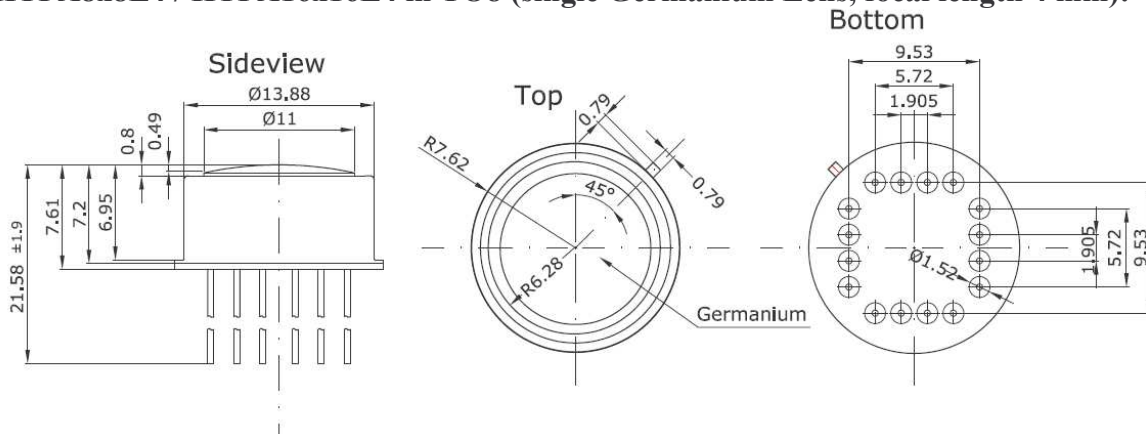
Possible Combinations						
Lens	HTPA8x8 TO39	HTPA8x8 TO8	HTPA16x16	HTPA32x31	HTPA64x62	Remarks
L3	X	X	X	-	-	TO8:f/0.5 TO39:f/0.58 Ge
L4	-	X	X	X	X	f/0.45 Ge
L5.5	X	-	-	-	-	f/1.0 Si
L7/0.7	-	X	X	X	X	f/0.67 Ge
L7/1.0	X	-	-	-	-	f/0.98 Ge
L10/0.8	-	X	X	X	X	f/0.8 Dual Ge
L10/1.0	-	X	X	X	X	f/1.0 Dual Ge

Outer Dimensions:

HTPA8x8L7 / HTPA16x16L7 in TO8 (single Germanium Lens, focal length 7 mm):



HTPA8x8L4 / HTPA16x16L4 in TO8 (single Germanium Lens, focal length 4 mm):



HEIMANN Sensor GmbH
Grenzstr. 22
D-01109 Dresden / Germany

Contact / Customer Support
Phone 49 (0) 6123 60 50 30
Fax 49 (0) 6123 60 50 39

Internet
www.heimannsensor.com
mail: info@heimannsensor.com

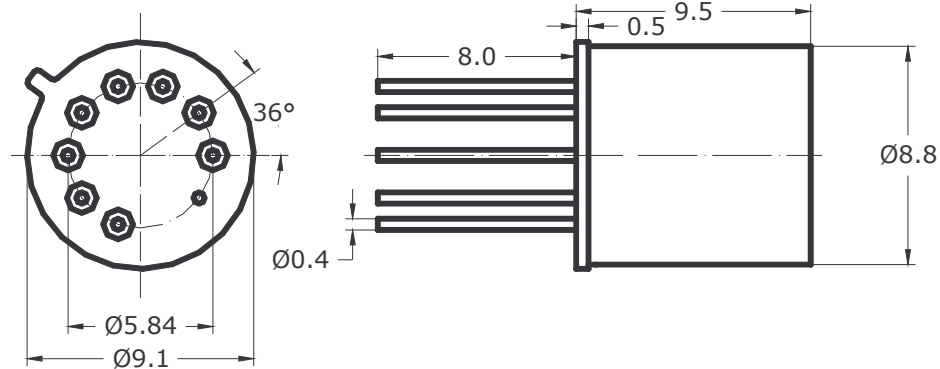
Specifications for Thermopilearrays HTPA8x8, HTPA16x16 and HTPA32x31

Rev.12: 2010.08.03 Fg

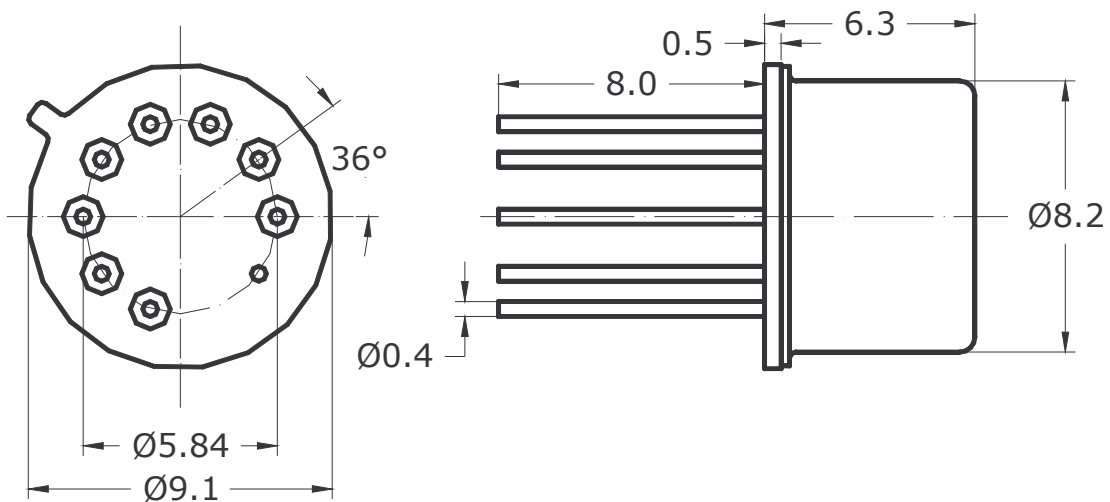


Outer Dimensions (continued):

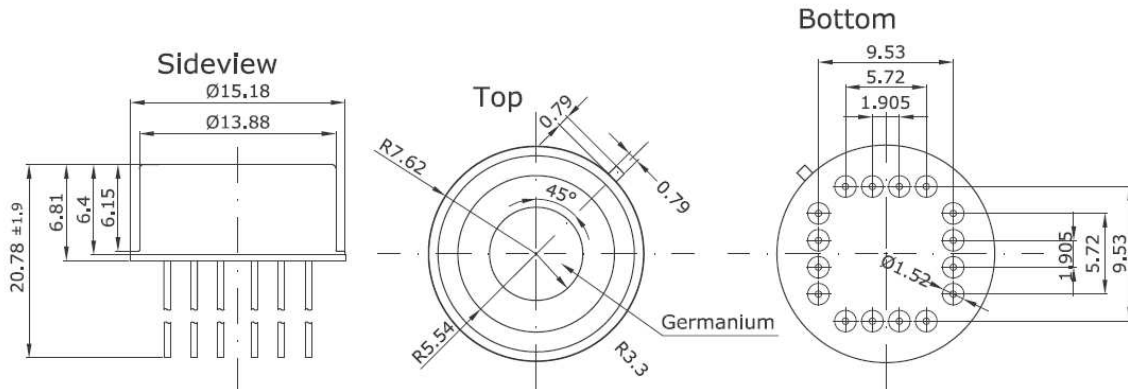
HTPA8x8L7 in TO39 (single Germanium Lens, focal length 7 mm), preliminary:



HTPA8x8L3 in TO39 (single Germanium Lens, focal length 3 mm), preliminary:



HTPA8x8L3 / HTPA16x16L3 in TO8 (single Germanium Lens, focal length 3 mm):



HEIMANN Sensor GmbH
Grenzstr. 22
D-01109 Dresden / Germany

Contact / Customer Support
Phone 49 (0) 6123 60 50 30
Fax 49 (0) 6123 60 50 39

Internet
www.heimannsensor.com
mail: info@heimannsensor.com

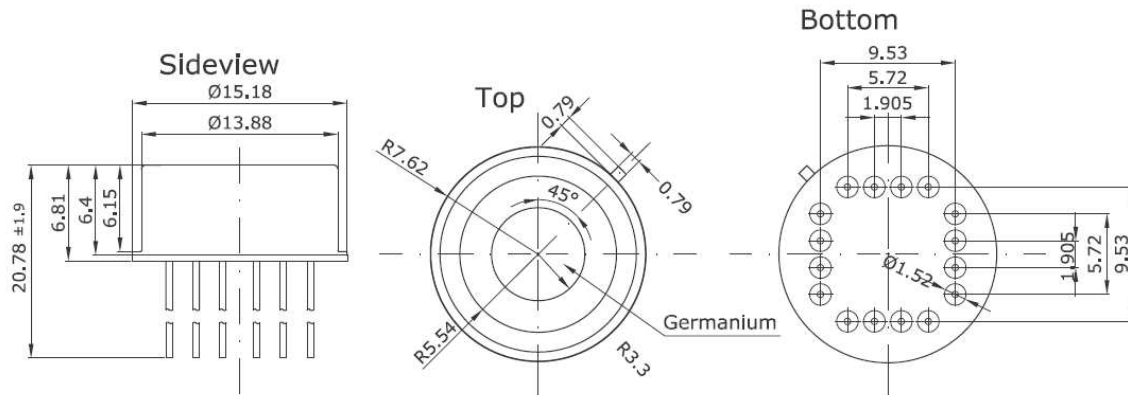
Specifications for Thermopilearrays HTPA8x8, HTPA16x16 and HTPA32x31

Rev.12: 2010.08.03 Fg

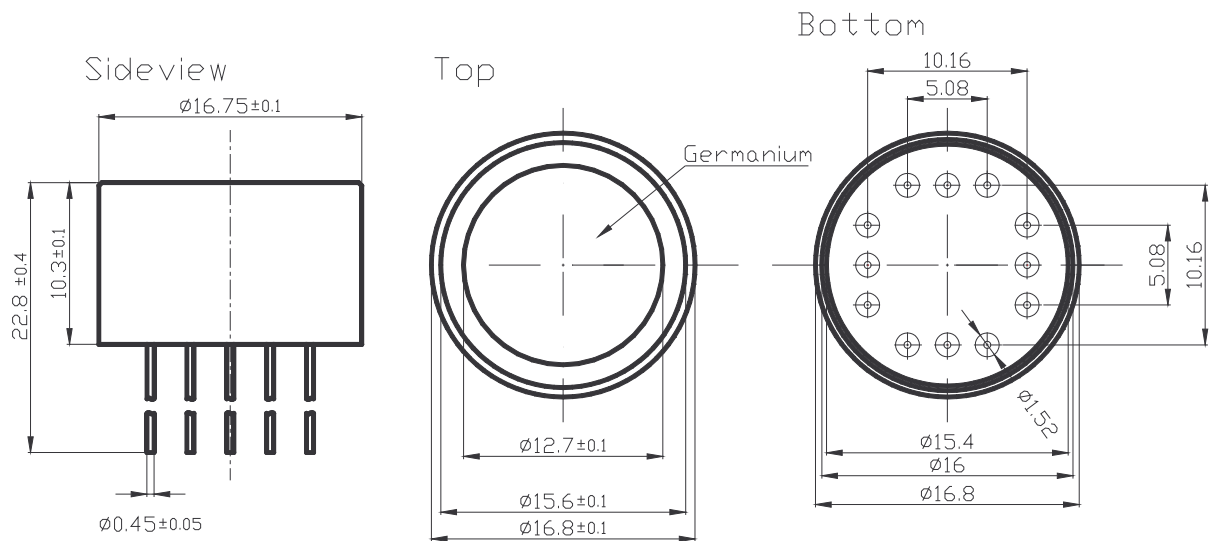


Outer Dimensions (continued):

HTPA8x8L3 / HTPA16x16L3 in TO8 (single Germanium Lens, focal length 3 mm):



HTPA32x31L7 in TO8 (single Germanium Lens, focal length 7 mm):



HEIMANN Sensor GmbH
Grenzstr. 22
D-01109 Dresden / Germany

Contact / Customer Support
Phone 49 (0) 6123 60 50 30
Fax 49 (0) 6123 60 50 39

Internet
www.heimanssensor.com
mail: info@heimanssensor.com

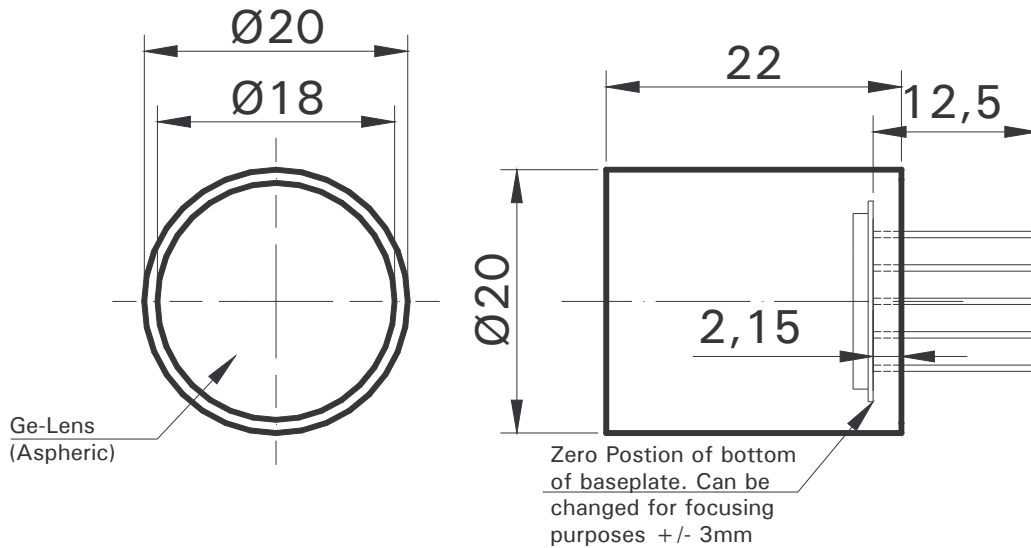
Specifications for Thermopilearrays HTPA8x8, HTPA16x16 and HTPA32x31

Rev.12: 2010.08.03 Fg

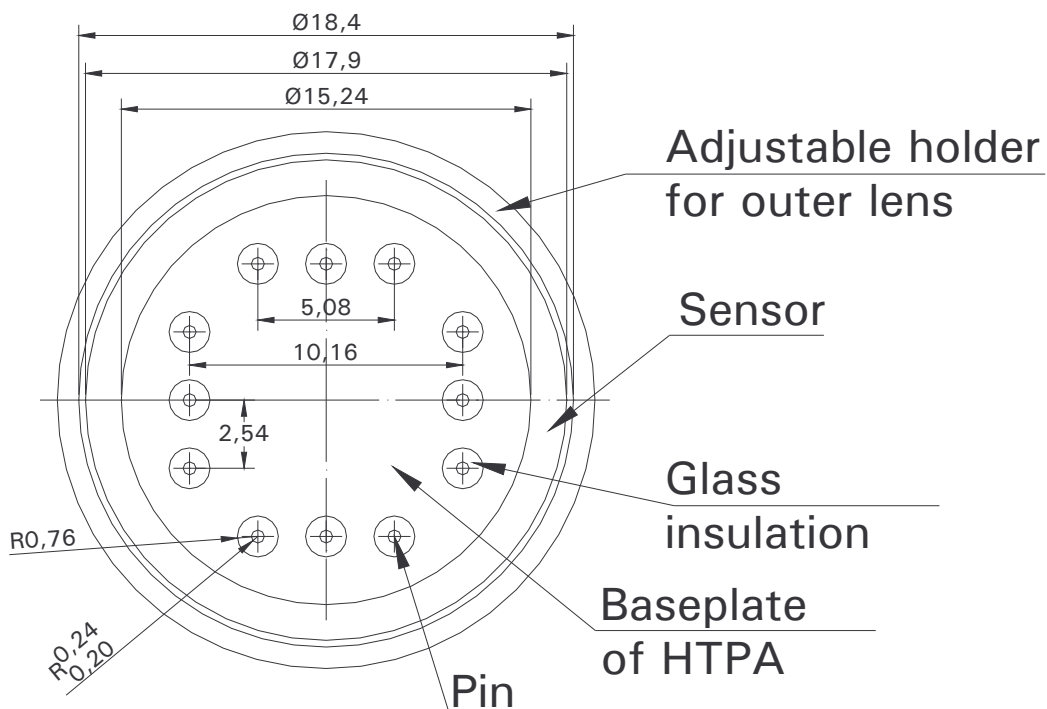


Outer Dimensions (continued):

HTPA32x31L10/0.8 (dual Germanium Aspheric/Spherical lens combination, focal length 10mm):



Bottom view:



HEIMANN Sensor GmbH
Grenzstr. 22
D-01109 Dresden / Germany

Contact / Customer Support
Phone 49 (0) 6123 60 50 30
Fax 49 (0) 6123 60 50 39

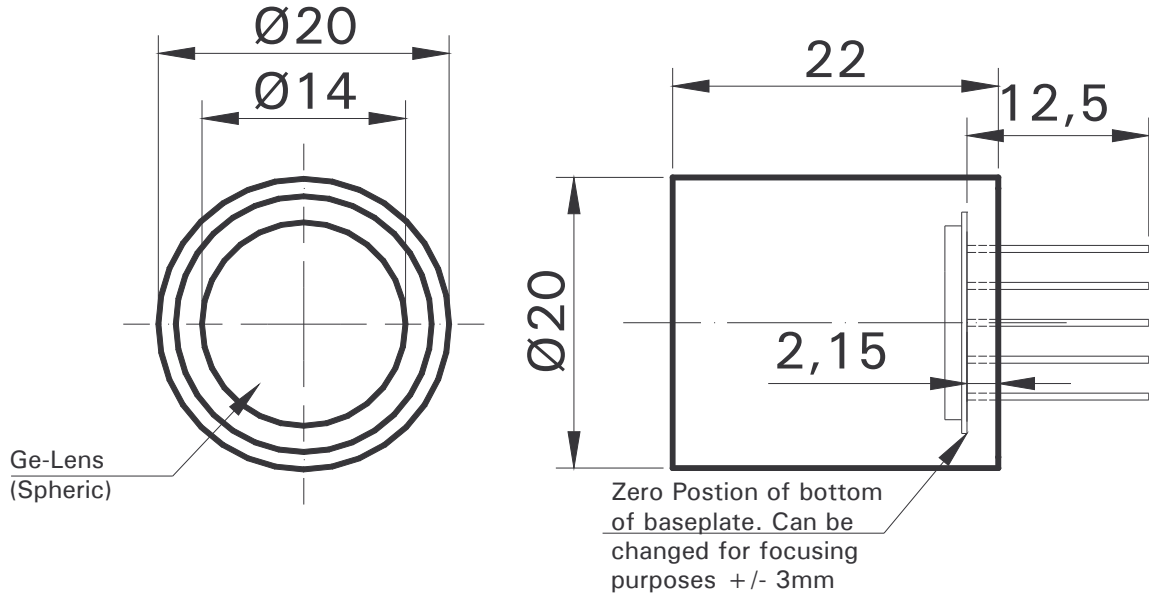
Internet
www.heimanssensor.com
mail: info@heimanssensor.com

Specifications for Thermopilearrays HTPA8x8, HTPA16x16 and HTPA32x31

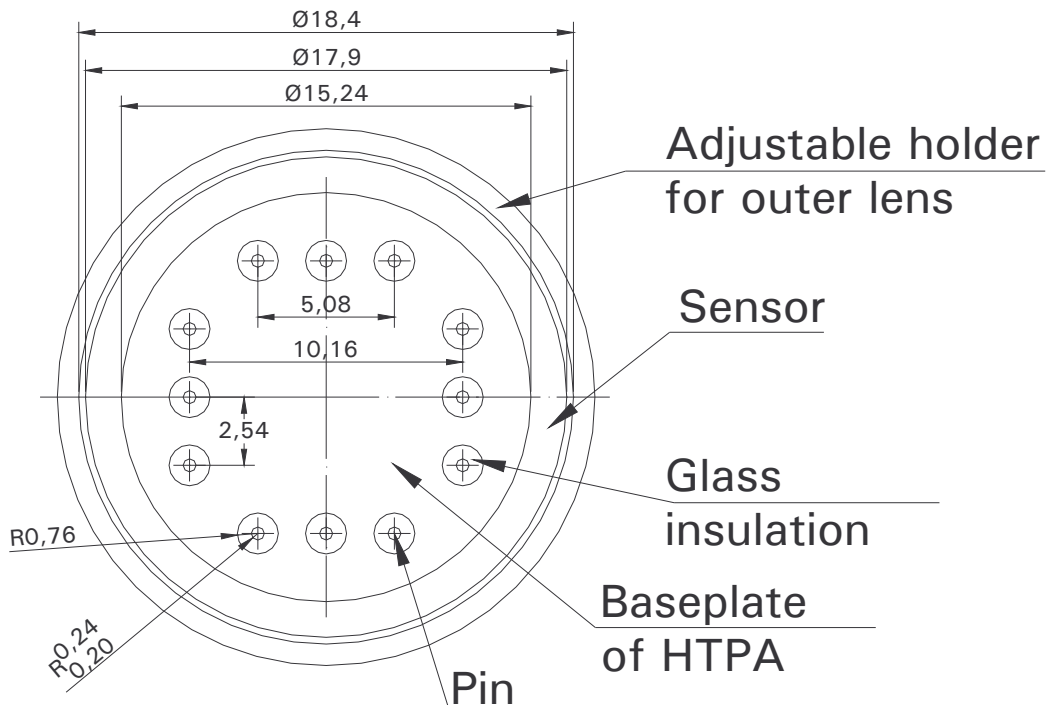
Rev.12: 2010.08.03 Fg



HTPA32x31L10/1.0 (dual Germanium Spherical/Spherical lens combination, focal length 10mm):



Bottom view:



HEIMANN Sensor GmbH
Grenzstr. 22
D-01109 Dresden / Germany

Contact / Customer Support
Phone 49 (0) 6123 60 50 30
Fax 49 (0) 6123 60 50 39

Internet
www.heimanssensor.com
mail: info@heimanssensor.com

Specifications for Thermopilearrays HTPA8x8, HTPA16x16 and HTPA32x31

Rev.12: 2010.08.03 Fg



Internal Register Map 8x8 and 16x16:

Num	Name	Function	Default	Notes
0	R	Reset	0	In case of 1, the mux pixel counter is reset. ASIC stays in reset.
1	OPCTL	Operating point control low	1	00: Analog operating point is at start of AD-range, only positive signals are convertible 01: Analog operating point is in the middle of AD-range, positive and negative signals are convertible 11: Analog operating point is at end of AD-range, only negative signals are convertible
2	OPCTLH	Operating point control high	0	10=01
3	MA0	Multiplexer address 0	0	-not used- write '0' to this location
4	MA1	Multiplexer address 1	0	-not used- write '0' to this location
5	MA2	Multiplexer address 2	0	-not used- write '0' to this location
6	MA3	Multiplexer address 3	0	-not used- write '0' to this location
7	MA4	Multiplexer address 4	0	-not used- write '0' to this location
8	MA5	Multiplexer address 5	0	-not used- write '0' to this location
9	MA6	Multiplexer address 6	0	-not used- write '0' to this location
10	AIM	Automatic increment mode	1	1 : auto increment mode 0: manual mode (not used)
11	AMPL	Amplification high bit	0	0: low amplification 1: high amplification
12		spare	0	-not used- write '0' to this location
13		spare	0	-not used- write '0' to this location
14		spare	0	-not used- write '0' to this location
15	BDUR	Break Duration	0	0: 64clks of MCLK 1: 32clks of MCLK

HEIMANN Sensor GmbH
Grenzstr. 22
D-01109 Dresden / Germany

Contact / Customer Support
Phone 49 (0) 6123 60 50 30
Fax 49 (0) 6123 60 50 39

Internet
www.heimannsensor.com
mail: info@heimannsensor.com

Specifications for Thermopilearrays HTPA8x8, HTPA16x16 and HTPA32x31

Rev.12: 2010.08.03 Fg



Internal Register Map 32x31:

Num	Name	Function	Default	Notes
0	R	Reset	0	In case of 1, the mux pixel counter is reset. ASIC stays in reset.
1		spare	1	-not used- write '1' to this location
2		spare	0	-not used- write '0' to this location
3	MA0	Multiplexer address 0	0	-not used- write '0' to this location
4	MA1	Multiplexer address 1	0	-not used- write '0' to this location
5	MA2	Multiplexer address 2	0	-not used- write '0' to this location
6	MA3	Multiplexer address 3	0	-not used- write '0' to this location
7	MA4	Multiplexer address 4	0	-not used- write '0' to this location
8	MA5	Multiplexer address 5	0	-not used- write '0' to this location
9	MA6	Multiplexer address 6	0	-not used- write '0' to this location
10	AIM	Automatic increment mode	1	1 : auto increment mode 0: manual mode (not used)
11	AMPL	Amplification high bit	0	0: low amplification 1: high amplification
12		spare	0	-not used- write '0' to this location
13		spare	0	-not used- write '0' to this location
14		spare	0	-not used- write '0' to this location
15	BDUR	Break Duration	0	0: 64clks of MCLK 1: 32clks of MCLK

HEIMANN Sensor GmbH
Grenzstr. 22
D-01109 Dresden / Germany

Contact / Customer Support
Phone 49 (0) 6123 60 50 30
Fax 49 (0) 6123 60 50 39

Internet
www.heimannsensor.com
mail: info@heimannsensor.com

Specifications for Thermopilearrays HTPA8x8, HTPA16x16 and HTPA32x31

Rev.12: 2010.08.03 Fg



Characteristics:

Common Specifications:

- | | |
|------------------------------|--|
| • Number of Thermocouples | 80 |
| • Technology | n-poly/p-poly Si |
| • Element Resistance | approx. 80 kOhms |
| • Sensitivity | approx. 60 V/W without optics and filter |
| • Thermal Pixeltime constant | <4 ms |
| • MUX preamplifier noise | approx. 30 nV/ $\sqrt{\text{Hz}}$ |
| • Digital Interface | SPI |
| • Analog Output | Yes |
| • 2 point selectable Gains | 2640x / 7920 x |

Array-dependent Specifications:

8x8 elements:

- Pitch 300 μm
- Absorber size 220 μm
- Max. Framerate 66,8 Hz
(without Averaging)
- 4 internal Amps + MUX
- 64 sensitive elements
- Internal ADC 12 bit

FOV(L=3mm)= 44 deg
FOV(L=4mm)= 33 deg
FOV(L=7mm)= 20 deg

16x16 elements:

- Pitch 220 μm
- Absorber size 150 μm
- Max. Framerate 17,7 Hz
(without Averaging)
- 8 internal Amps + MUX
- 256 sensitive elements
- Internal ADC 12 bit

FOV(L=3mm)= 61 deg
FOV(L=4mm)= 48 deg
FOV(L=7mm)= 28 deg

32x31 elements:

- Pitch 220 μm
- Absorber size 150 μm
- Max. Framerate 9,1 Hz *
(without Averaging)
- 16 internal Amps + MUX
- 992 sensitive elements
- Internal ADC none

FOV(L=7mm)= 53 x 52 deg
FOV(L=10mm)= 39 x 38deg

L equals the focal length of the lens.

*) Framerates up to approx. 20 Hz are possible, but not approved yet.

HEIMANN Sensor GmbH
Grenzstr. 22
D-01109 Dresden / Germany

Contact / Customer Support
Phone 49 (0) 6123 60 50 30
Fax 49 (0) 6123 60 50 39

Internet
www.heimannsensor.com
mail: info@heimannsensor.com

Specifications for Thermopilearrays HTPA8x8, HTPA16x16 and HTPA32x31

Rev.12: 2010.08.03 Fg



Electric Specifications:

Absolute Maximum Ratings:

Parameter	Symbol	Condition	MIN.	TYP.	MAX.	Unit
Supply Voltage	V _{CC}		-0.5		6	V
Voltage at All inputs and outputs	V _{IO}		-0.5		V _{CC} +0.5	V
Storage Temperature	T _{STG}		-30		125	Deg. C

Operating Conditions:

Parameter	Symbol	Condition	MIN.	TYP.	MAX.	Unit
Supply Voltage	V _{CC}		4.5		5.5	V
Operation Temperature	T _A		0		85	Deg. C
ESD-Protection		Human body model	1.5			kV
		100pF + 1k50hm				

Electrical Characteristics

Parameter	Symbol	Condition	MIN.	TYP.	MAX.	Unit
-----------	--------	-----------	------	------	------	------

Digital Input

Frequency of MCLK	MCLK			1M	TBD	Hz
Input voltage high	V _{IH}		V _{DD} -1.2			V
Input voltage low	V _{IL}				1.2	V
Operating Frequency	f _{OP}	CLK_1MHz	500k	1M	TBD	Hz

PTAT

Temperature range			0		85	Deg. C
PTAT value@ -20°C				TBD		V
PTAT value@100°C				TBD		V

Signal Processing

First amplifier stage gain	G0		TBD	880	TBD	V/V
Second amplifier stage gain	G1	AMPL=0	TBD	3	TBD	V/V
Second amplifier stage gain	G1	AMPL=1	TBD	9	TBD	V/V
Analog path Output ripple	V _{PPSENS}		-	-	TBD	mV
Temp. coefficient Thermopile path output voltage	TC _{OUTA}		TBD	-	TBD	mV/K

VoltageReference

VREF_1225	V _{REF}	V _{CC} =5V, T _{amb} =25°C	1.2	1.225	1.25	V
Temp. coeff. of V _{REF}	TC _{REF}		TBD		TBD	ppm/K

HEIMANN Sensor GmbH
Grenzstr. 22
D-01109 Dresden / Germany

Contact / Customer Support
Phone 49 (0) 6123 60 50 30
Fax 49 (0) 6123 60 50 39

Internet
www.heimannsensor.com
mail: info@heimannsensor.com

Specifications for Thermopilearrays HTPA8x8, HTPA16x16 and HTPA32x31

Rev.12: 2010.08.03 Fg



Electrical Characteristics (continued)

Parameter	Symbol	Condition	MIN.	TYP.	MAX.	Unit
-----------	--------	-----------	------	------	------	------

Analog Output

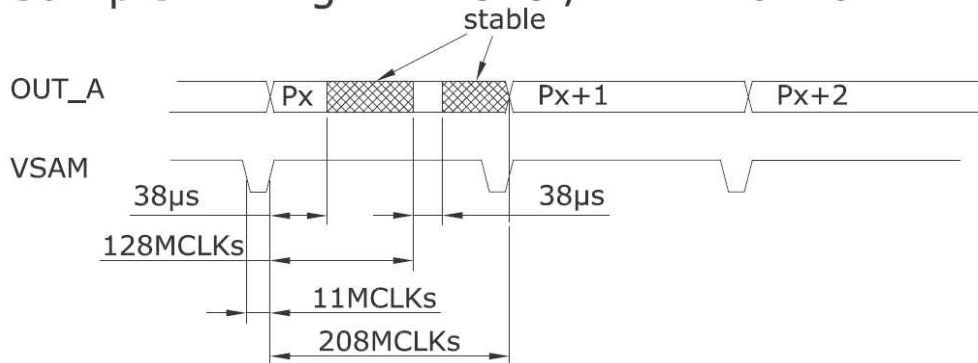
Output voltage swing	V_{OUTA}	load 10kOhm	0.5		$V_{CC}-0.8$	V
Power supply rejection ratio	P_{SRR}	AMPL=1	TBD			dB
Output current limit	I_{OUTA}	OUT_A	0.15			mA

General Parameters

Overall current consumption	I_{DD}	CLK_1MHz=1MHz		7	TBD	mA
Start up time	T_{POR}	CLK_1MHz=1MHz Power On to first sample			TBD	mS

Timings HTPA8x8 and HTPA16x16:

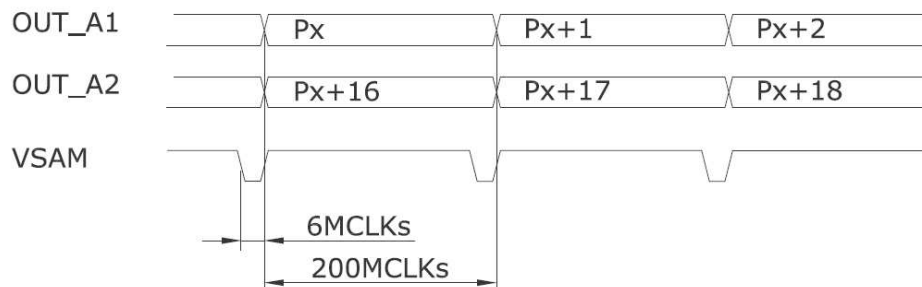
Sample Timing HTPA8x8 / HTPA16x16



For the HTPA 8x8 and the HTPA 16x16 every analogous voltage has 2 stable domains, as shown above.

Timings HTPA32x31:

Sample Timing HTPA32x31



For the HTPA32x31 every analogous voltage is stable in the whole time domain.

HEIMANN Sensor GmbH
Grenzstr. 22
D-01109 Dresden / Germany

Contact / Customer Support
Phone 49 (0) 6123 60 50 30
Fax 49 (0) 6123 60 50 39

Internet
www.heimanssensor.com
mail: info@heimanssensor.com

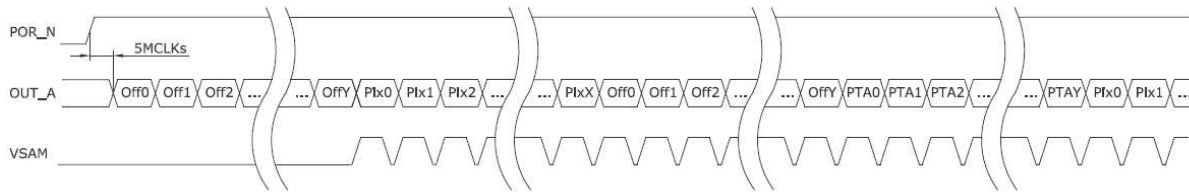
Specifications for Thermopilearrays HTPA8x8, HTPA16x16 and HTPA32x31

Rev.12: 2010.08.03 Fg



Serial Transmission:

HTPA8x8 / HTPA16x16 Serial Transmission of analogue data



Off0...OffY Electric offset of amplifier 0 to amplifier Y
 Pix0...PixX Amplified pixel voltage of Pixel0 to PixelX
 PTA0...PTAY PTAT-Signal ((Y+1)-times)

Constants for array types:

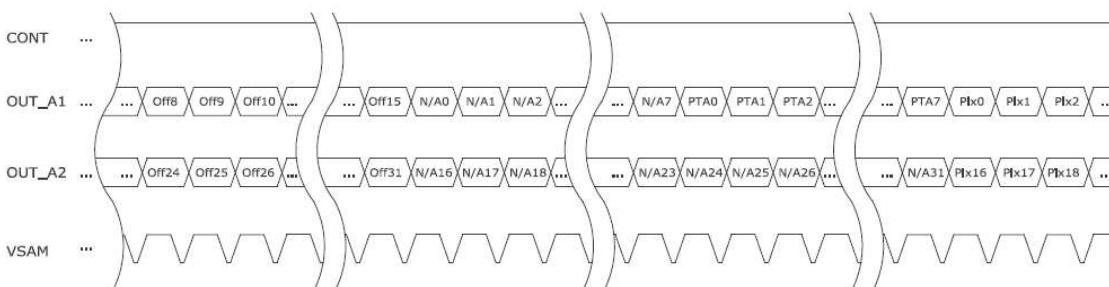
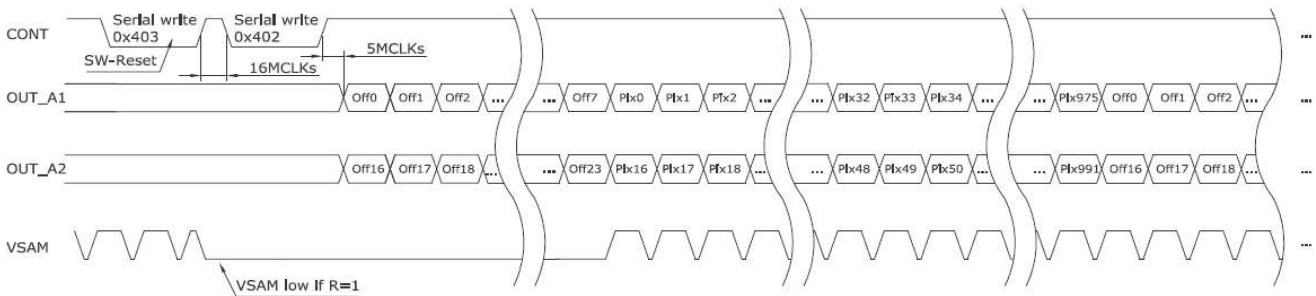
Type 8x8:

Y=3
 X=63

Type 16x16:

Y=7
 X=255

HTPA32x31 Serial Transmission of analogue data



The numeration of the pixels is in all cases line by line.

HEIMANN Sensor GmbH
 Grenzstr. 22
 D-01109 Dresden / Germany

Contact / Customer Support
 Phone 49 (0) 6123 60 50 30
 Fax 49 (0) 6123 60 50 39

Internet
www.heimannsensor.com
 mail: info@heimannsensor.com

Specifications for Thermopilearrays HTPA8x8, HTPA16x16 and HTPA32x31

Rev.12: 2010.08.03 Fg



SPI Communication:

Data sampled at rising edge of SCLK, MSB first.

In case of ASIC as master device the frequency of the SCLK_IO is equal to the frequency of MCLK/2.

HTPA8x8 & HTPA16x16:

The four MSB's signify the row address of the current pixel, the other bits describe the ADC-result.

HTPA 32x31:

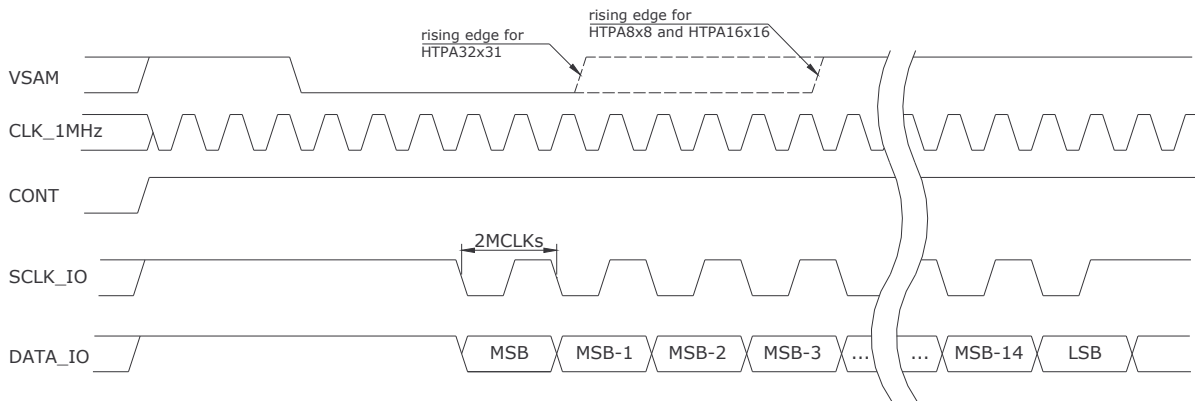
The valid sample cycle numbers are expensed in the least 10 bits. The value runs from 0 to 527.

The output drivers for SCLK_IO and DATA_IO are enabled by CONT.

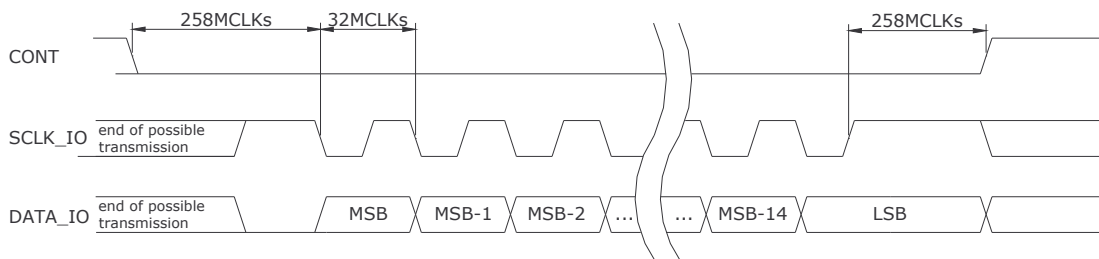
If CONT is low the data can be written serially from external controller through DATA_IO.

In that case the external controller has to wait a minimum delay time, until SCLK_IO and DATA_IO output drivers are disabled. After programming, the positive slope of CONT stores the contents, when the number of SCLK-pulses is equal 16. While the output driver of the ASIC is disabled a weak pull up ensures that the SCLK_IO pin is at high level. To execute a reset command, the μ C has to write a logical "1" to the R-Bit in to configuration and afterwards a "0" into the R-bit, which requires two write cycles in this special case.

Serial Read from ASIC



Serial Write to ASIC



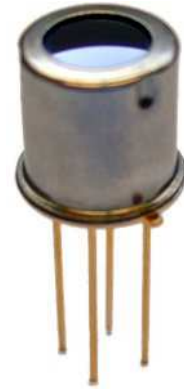
HEIMANN Sensor GmbH
Grenzstr. 22
D-01109 Dresden / Germany

Contact / Customer Support
Phone 49 (0) 6123 60 50 30
Fax 49 (0) 6123 60 50 39

Internet
www.heimannsensor.com
mail: info@heimannsensor.com

1 Features and Benefits

- Small size single die, low cost 16x4 pixels IR array
- Easy to integrate
- Industry standard four lead TO-39 package
- Factory calibrated. Pixel to pixel relative error below 1.5%
- NETD (Noise Equivalent Temperature Difference) <0.5K@1Hz refresh rate
- I²C compatible digital interface
- Programmable refresh rate 0.5Hz...512Hz (averaging recommend frame rate 32Hz)
- 3V typical supply voltage
- Current consumption less than 7mA
- Measurement start trigger for synchronization with external control unit
- Different package options for applications and measurements versatility
- Ta -40 to 85 degC
- To -50 to 1000 degC possible; depending on accuracy requirement



2 General Description

The HTPA 16x4 is a (16x4 pixels) fully calibrated IR array in industry standard four lead TO-39 package. It contains 2 chips in one package: the HTPA 16x4 (IR array plus electronics) and the 24AA02 (256x8 EEPROM)

The HTPA 16x4 contains 64 IR pixels with dedicated low noise chopper stabilized amplifier and fast ADC integrated. A PTAT (Proportional To Absolute Temperature) sensor is integrated to measure the ambient temperature of the chip. The outputs of both IR and PTAT sensors are stored in internal RAM and are accessible through I²C.

The results of the infrared sensor measurements are stored in RAM:

- 16-bit result of IR measurement for each individual sensor (64 words)
- 16-bit result of PTAT sensor

Depending on the application, an external microcontroller can read the different RAM data and, based on the calibration constants, compensate the different sensitivities of each pixel to build up a thermal image, or calculate the object temperature at each pixel at the imaged scene.

These constants are accessible by the microcontroller through the I²C bus and have to be used for external post processing of the thermal data. This post processing includes:

- Ta calculation
- Pixel offset cancelling
- Pixel to pixel sensitivity difference compensation
- Object emissivity compensation
- Object temperature calculation
- Image processing and correction if necessary

The result is an image with NETD better than 0.5K at 1Hz refresh rate.

The refresh rate of the array is programmable by means of EEPROM settings or directly via I²C command. Changes of the refresh rate have a direct impact on the integration time and noise bandwidth (faster refresh rate means higher noise level). The refresh rate is programmable in the range 0,5Hz...512Hz and can be changed to achieve the desired tradeoff between speed and accuracy.

The HTPA 16x4 requires a single 3V supply ($\pm 0,6V$).

The customer can choose between 3 operating modes:

- **Normal.** In this mode the device is free running under control of the internal state machine. Depending on the selected refresh rate Fps (Frame per second) the chip is constantly measuring both IR and PTAT and is refreshing the data in the RAM with specified refresh rate;
- **Step.** This mode is foreseen for synchronization with an external micro-controller. The internal state machine is halted. If the command 'StartMeas' is received via the I²C bus, a single measurement of all IR and PTAT sensors will be done, then the chip will return in wait state. When in wait state the data in RAM can be read.
- **Power saving mode.** In this mode all internal electronics will be completely shutdown and the chip will monitor the I²C. Any transmission through I²C initiated by Start condition will be detected. The internal oscillator will be powered on and the device will receive the slave address (SA). If the SA address of HTPA 16x4 is recognized (SA=0x60) the device will respond, receive and execute the command. Otherwise the chip will remain in power saving mode. The power saving mode can reduce current consumption down to 5 μ A and is excellent for battery applications.

The HTPA 16x4 is factory calibrated in wide temperature ranges:

- -40...85 °C for the ambient temperature sensor
- -70...300 °C for the object temperature.

All figures are depending on the accuracy requirement.

Each pixel of the array will measure the average temperature of all objects in its own Field Of View (called FOV).

It is very important for the application designer to understand that the accuracy of the temperature measurement is very sensitive to the thermal equilibrium isothermal conditions (there are no temperature differences across the sensor package). The accuracy of the thermometer can be influenced by temperature differences in the package induced by causes like (among others): Hot electronics behind the sensor, heaters/coolers behind or beside the sensor or by a hot/cold object very close to the sensor that not only heats the sensing element in the thermometer but also the thermometer package.

This effect is especially relevant for thermometers with a small FOV as the energy received by the sensor from the object is reduced. Therefore, Heimann Sensor has integrated the possibility to measure the internal thermal gradients and to compensate the temperature calculation for them. However, this cannot completely compensate the effect of thermal gradients. It is therefore important to avoid the causes of thermal gradients as much as possible or to shield the sensor from them.

Directory

1	Features and Benefits	1
2	General Description	2
3	Ordering Information	6
4	Pin Configuration	6
5	Dimensional Drawings	7
6	Maximum Ratings	8
7	Operating Conditions	8
8	Block diagram	10
9	Block description.....	11
9.1	Array layout	11
10	Memories	12
10.1	RAM (Result Memory)	12
10.1.1	Configuraton register	13
10.1.2	Trimming register.....	14
10.2	EEPROM	15
10.3	POR.....	17
11	Communication protocol.....	17
11.1	Start / Stop condition	17
11.2	Device addressing	18
11.3	Acknowledge	18
11.4	EEPROM Communication	18
11.5	Sensor Communication	18
11.5.1	Measurement trigger.....	18
11.5.2	Read measurement data	19
12	Device modes	21
12.1	Normal mode.....	21
12.2	Step mode	21
12.3	Power saving mode	21
13	Integrated Sensor for gradient compensation.....	22
14	Temperature calculation flow	23
14.1	Initialization	24
15	Calculation Considerations.....	25
15.1	Calculation of absolute temperature of the die (Ta)	25
15.2	Example for Ta calculations	26
15.3	Calculation of To	27
15.4	Calculating VIR(I,j)_COMPENSATED	28
15.5	Calculating $\alpha(i,j)$	29

15.6	Example for To calculations	30
16	Performance Graphs	32
16.1	Calculated Field Of View (FOV).....	32
17	Applications Information.....	33
17.1	Use of the HTPA 16x4 in I ² C configuration	33
18	Application Comments	33
19	Initialization.....	34
20	Liability	34
21	Glossar	35

3 Ordering Information

- HTPA → Heimann thermopile array
- a x b → number of elements
- L xx → „L“ lens cap TO39 followed by focal length of lens

4 Pin Configuration

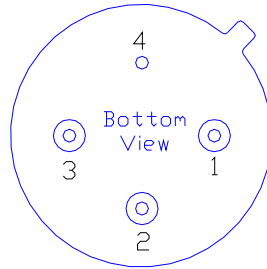


Figure 1: pin-allocation

Pin	Symbol	Description
1	SCL	Digital input, serial clock in SMBus compatible mode
2	SDA	Digital I/O, data input /output in SMBus compatible mode (open drain)
3	VDD	Positive supply voltage
4	VSS	Negative supply voltage / Ground (0V) (connected to housing)

5 Dimensional Drawings

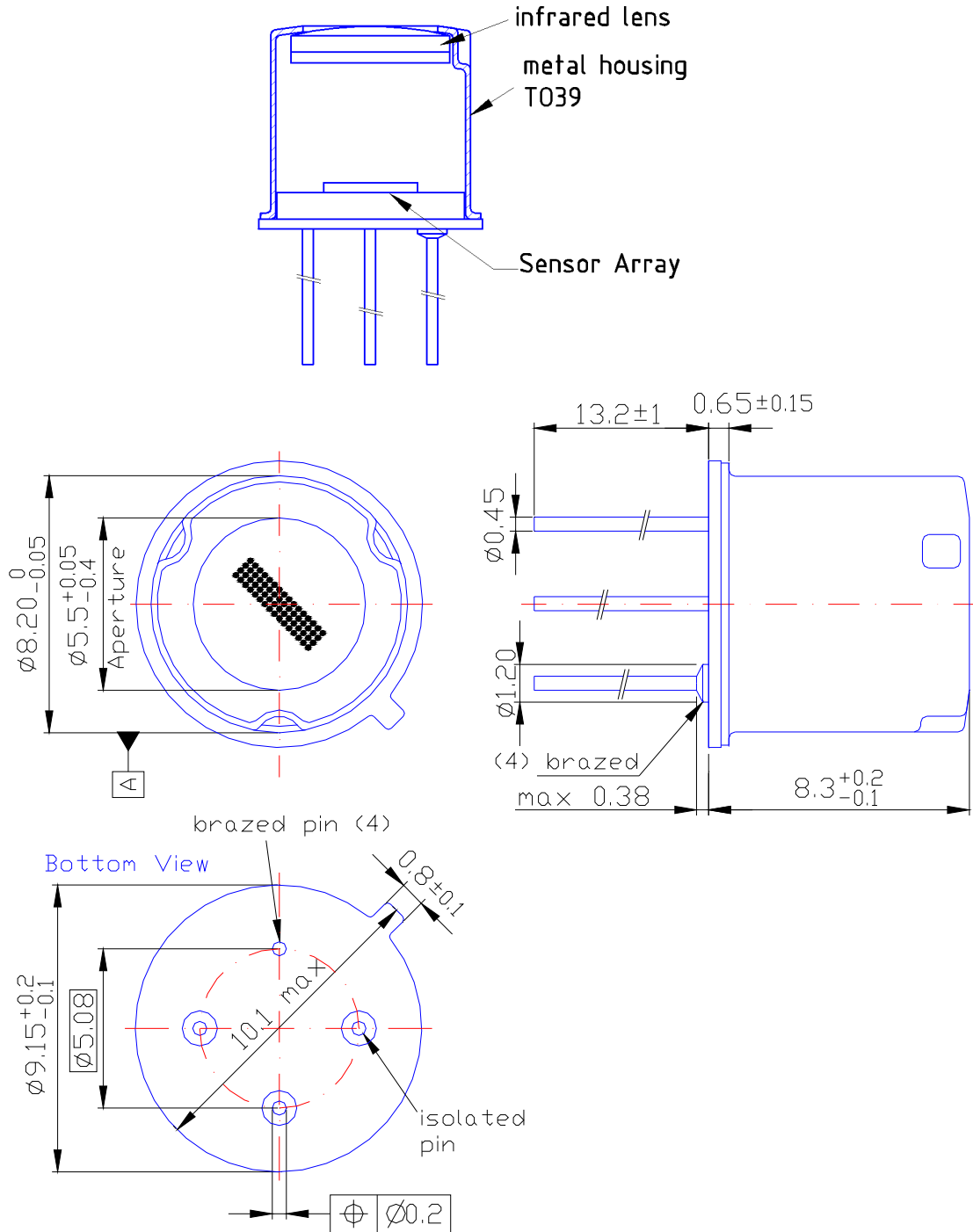


figure 2: dimensional drawing

HEIMANN Sensor GmbH
 Grenzstr. 22
 D-01109 Dresden, Germany

Contact / Customer Support
 Phone 49 (0) 6123 60 50 30
 Fax 49 (0) 6123 60 50 39

Internet
www.heimannsensor.com
 e-mail: info@heimannsensor.com

6 Maximum Ratings

Tab 1: maximum ratings and values

Parameter	HTPA 16x4
Supply Voltage, VDD (over voltage)	5V
Supply Voltage, VDD (operating)	3.6V
Reverse Voltage (each pin)	-0.3 V
Operating Temperature Range, TA	-40...+85°C
Storage Temperature Range, TS	-40...+125°C
ESD Sensitivity (AEC Q100 002)	2kV (4kV)
DC sink current, SDA	25 mA
DC source current, SDA	NA
DC clamp current, SDA	NA
DC source current, SCL	NA (input only)
DC clamp current, SCL	NA

Exceeding the absolute maximum ratings may cause permanent damage. Exposure to absolute-maximum-rated conditions for extended periods may affect device reliability.

7 Operating Conditions

All parameters are preliminary for $T_A = 25^\circ\text{C}$, $V_{DD} = 3\text{V}$ (unless otherwise specified)

Tab 2: operating conditions

Parameter	Symbol	Test Conditions	Min	Typ	Max	Units
Supplies						
External supply	V_{DD}		2.4	3	3.6	V
Supply current	I_{DD}	No load		3.5	5	mA
Supply current (programming)	I_{DDpr}	No load, erase/write EEPROM operations		not specified	not specified	mA
Power On Reset						
POR level	V_{POR_up}	Power-up (full temp range)	2	2.2	2.4	V
POR level	V_{POR_down}	Power-down (full temp)	1.9	2.1	2.3	V
POR hysteresis	V_{POR_hys}	Full temp range		0.1		V
V_{DD} rise time (10% to 90% of specified supply)	T_{POR}	Ensure POR signal	100			μs
I²C compatible 2-wire interface²						
Input high voltage	V_{IH} (Ta, V)	Over temperature and supply	0.7V			V
Input low voltage	V_{IL} (Ta, V)	Over temperature and supply			0.3VD	V
Output low voltage	V_{OL}	SDA over temperature and supply, Isink = 6mA (FM)			0.6	V
Output low voltage	V_{OL}	SDA over temperature and supply, Isink = 20mA (FM+)			0.4	V

SCL leakage	$I_{SCL, leak}$	$V_{SCL}=4V, Ta=+85^{\circ}C$			10	μA
SDA leakage	$I_{SDA, leak}$	$V_{SDA}=4V, Ta=+85^{\circ}C$			10	μA
SCL capacitance	C_{SCL}				10	pF
Slave address	SA	Factory default		60		hex
Clock frequency	SCL_{IR}				1	MHz
Acknowledge setup time	$T_{suac}(MD)$	8-th SCL falling edge, Master			0.45	μs
Acknowledge hold time	$T_{hdac}(MD)$	9-th SCL falling edge, Master			0.45	μs
Acknowledge setup time	$T_{suac}(SD)$	8-th SCL falling edge, Slave			0.45	μs
Acknowledge hold time	$T_{hdac}(SD)$	9-th SCL falling edge, Slave			0.45	μs
EEPROM						
Slave address	SA	Factory default		50		hex
Clock frequency	SCL_{EEPROM}				400	kHz
Data retention		$Ta = +85^{\circ}C$	200			years
Erase/write cycles		$Ta = +25^{\circ}C$	1M			Times
Erase/write cycles		$Ta = +125^{\circ}C$	100K			Times
Erase cell time	T_{erase}				5	ms
Write cell time	T_{write}				5	ms

8 Block diagram

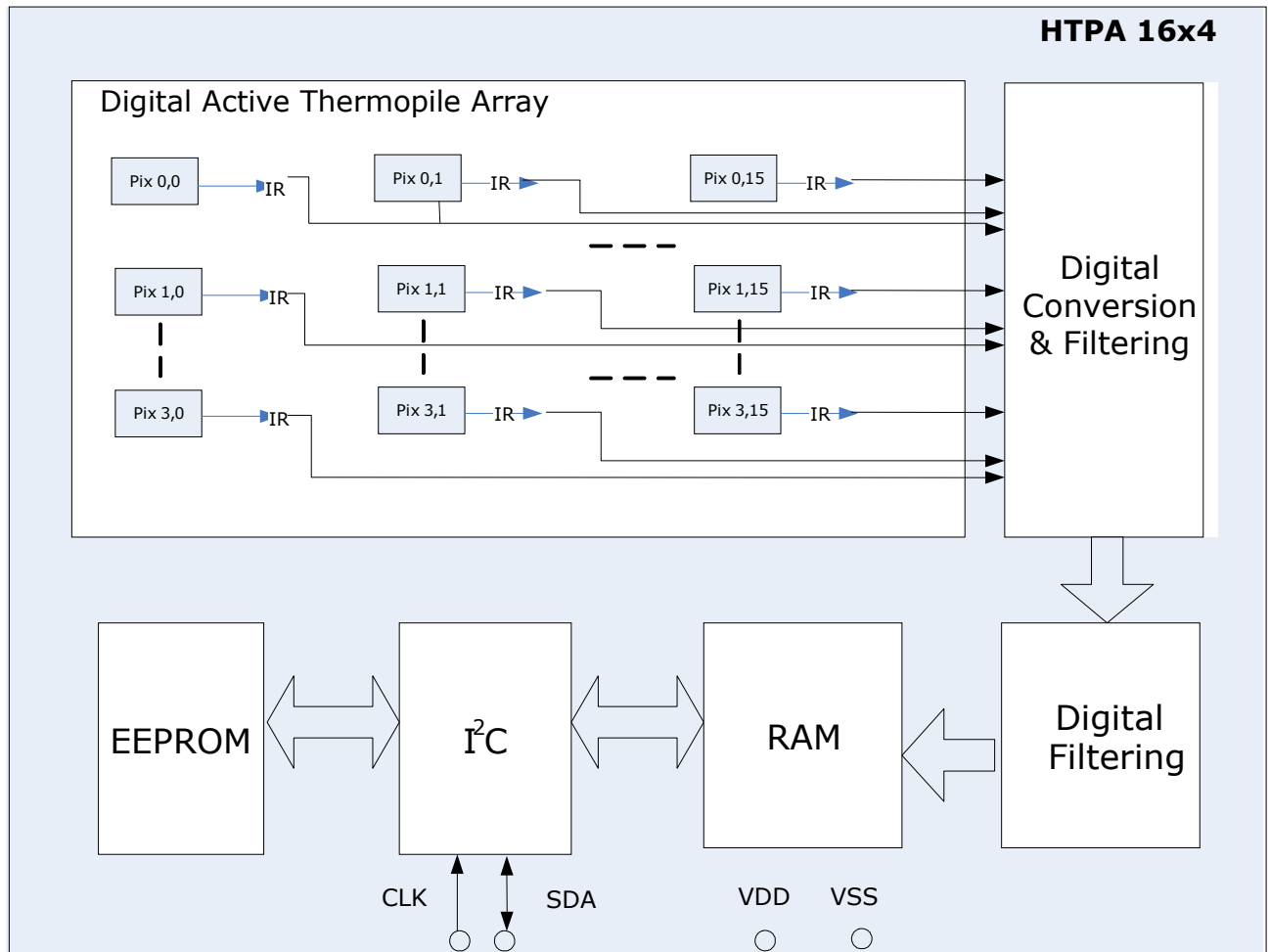


Figure 3: block diagram

The device consists of 2 chips packed in single TO-39 package

- IR array and processing electronics
- EEPROM chip

9 Block description

9.1 Array layout

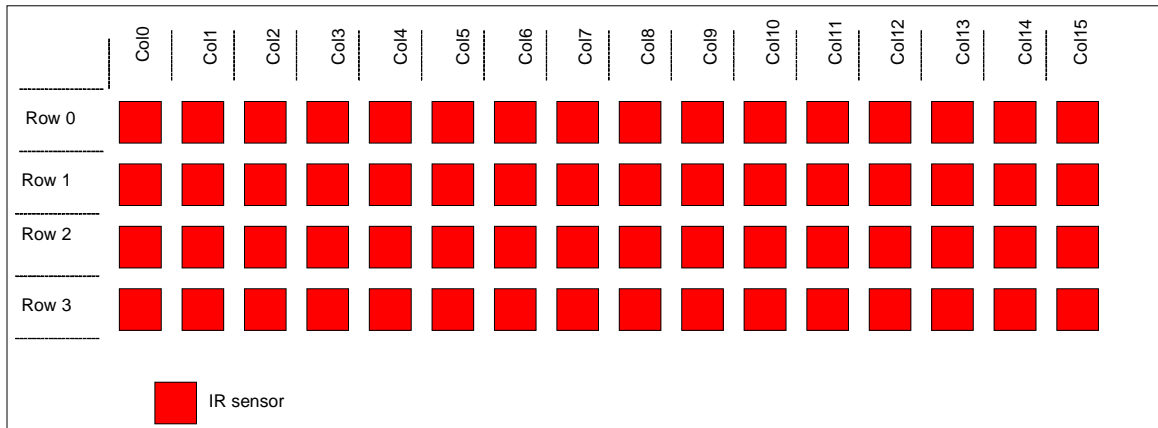


Figure 4: array layout of IR sensors and Ta-Sensors

The array consists of 64 IR sensors (called also pixels). Each pixel is identified with its row and column position as $Pix(i,j)$ where i is its row number and j is its column number (from 0 to 15).

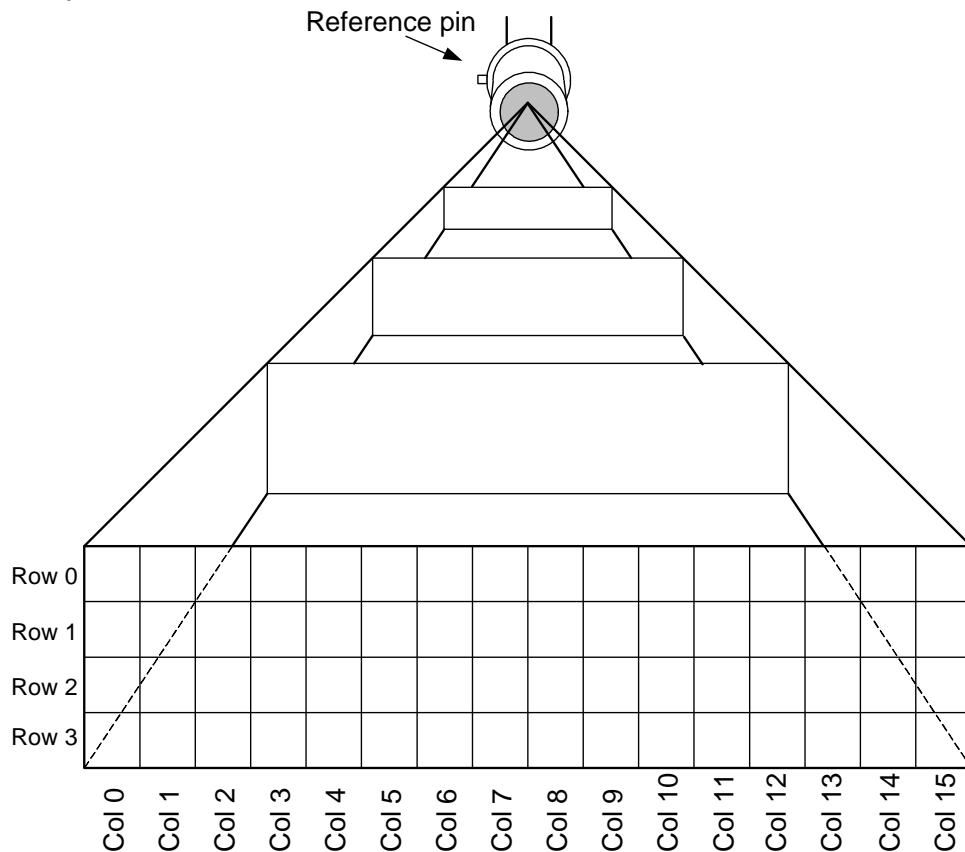


Figure 5: assignment from inside alignment to external reference pin

10 Memories

10.1 RAM (Result Memory)

The on chip 146x16 RAM is accessible for reading via I²C. The RAM is used for storing the results of measurements of pixels and Ta sensor and is distributed as follows:

- 64 words for IR sensors. The data will be in 2's complement format
- 1 word for measurement result of PTAT sensor. This sensor is selected to be a reference Ta for the device. The temperatures of all other Ta sensors are measured relative to this one. The data is 16 bit without sign. Physically this sensor is placed close to Ta(1,1).

Tab. 3: RAM map

Address	RAM variable description
0x00	IR sensor (0,0) result
0x01	IR sensor (1,0) result
0x02	IR sensor (2,0) result
0x03	IR sensor (3,0) result
0x04	IR sensor (0,1) result
0x05	IR sensor (1,1) result
0x06	IR sensor (2,1) result
0x07	IR sensor (3,1) result
...	...
0x3C	IR sensor (0,15) result
0x3D	IR sensor (1,15) result
0x3E	IR sensor (2,15) result
0x3F	IR sensor (3,15) result
0x90	PTAT sensor result
0x91	Compensation sensor result
0x92	Configuration register
0x93	Trimming register

10.1.1 Configuraton register

The configuration register defines the chip operating modes.
 It can be read and written by the I²C MD.

Tab. 4: configuration register map

15	14	13	12	11	10	9	8	7	6	5	4	3	2	1	0	configuration register bit meaning (0x92)
												0	0	0	0	- IR Refresh rate = 512Hz - (default)
												0	0	0	1	- IR Refresh rate = 512Hz
												0	0	1	0	- IR Refresh rate = 512Hz
												0	0	1	1	- IR Refresh rate = 512Hz
												0	1	0	0	- IR Refresh rate = 512Hz
												0	1	0	1	- IR Refresh rate = 512Hz
												0	1	1	0	- IR Refresh rate = 256Hz
												0	1	1	1	- IR Refresh rate = 128Hz
												1	0	0	0	- IR Refresh rate = 64Hz
												1	0	0	1	- IR Refresh rate = 32Hz
												1	0	1	0	- IR Refresh rate = 16Hz
												1	0	1	1	- IR Refresh rate = 8Hz
												1	1	0	0	- IR Refresh rate = 4Hz
												1	1	0	1	- IR Refresh rate = 2Hz
												1	1	1	0	- IR Refresh rate = 1Hz
												1	1	1	1	- IR Refresh rate = 0.5Hz
										X	X	NA				
									0							- continuous measurement mode - (default)
									1							- step measurement mode
								0								- Normal operation mode
								1								- sleep mode - (default)
								0								- No Ta measurement running (Flag only, cannot be written) - (default)
								1								- Ta measurement running (Flag only, cannot be written)
								0								- No IR measurement running (Flag only, cannot be written)
								1								- IR measurement running (Flag only, cannot be written) - (default)
								0								- POR or Brown out occurred - Need to reload configuration register
								1								- MD must wright "1" during uploading configuration register - (default)
								0								- I2C FM + mode enabled (max bit transfer rates up to 1000kbits/s) - (default)
								1								- I2C FM + mode disabled (max bit transfer rates up to 400kbits/s)
								0	0							- Ta refresh rate = 4Hz - (default)
								0	1							- Ta refresh rate = 2Hz
								1	0							- Ta refresh rate = 1Hz
								1	1							- Ta refresh rate = 0.5Hz
								0								- ADC high reference enabled - (default)
								1								- ADC low reference enabled
x																NA

Please note, that the default values should be configured by the user before using the HTPA 16x4 the first time.

10.1.2 Trimming register

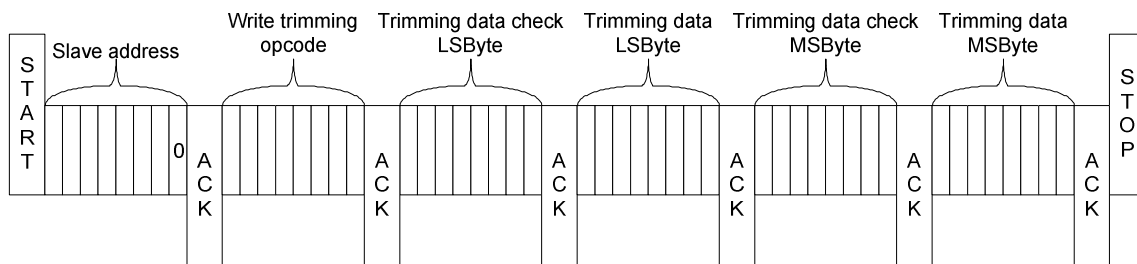
Tab. 5: trimming register

15	14	13	12	11	10	9	8	7	6	5	4	3	2	1	0	Trimming register bit meaning (0x93)
									7 bit value							- Oscillator trim value
x	x	x	x	x	x	x	x	x	x	NA						

Opcode – 0x04.

This command is used to set the trimming parameters – oscillator, bandgap, current source trimming bits values. It can be read and written by the I²C MD.

Simple data check is introduced. The two data bytes are sent two times: first time with the true data minus 0xAA and second time – the true data. The chip does the addition with 0xAA internally and checks the second received byte. Only if the addition results match with the received data for the two bytes, the configuration register is updated. The command communication is illustrated below:



10.2 EEPROM

A 2kbit, organized as 256x8 EEPROM is built in the HTPA 16x4. The EEPROM is on a separate die (separate SA = 0x50) and is used to store the calibration constants and the configuration of the device.

Tab. 6: EEPROM map

Address	0	1	2	3	4	5	6	7
00	ai(0,0)	ai(1,0)	ai(2,0)	ai(3,0)	ai(0,1)	ai(1,1)	ai(2,1)	ai(3,1)
08	ai - IR pixels individual offset coefficients							
10								
18								
20								
28								
30								
38	ai(0,14)	ai(1,14)	ai(2,14)	ai(3,14)	ai(1,15)	ai(2,15)	ai(3,15)	
40	bi(0,0)	bi(1,0)	bi(2,0)	bi(3,0)	bi(0,1)	bi(1,1)	bi(2,1)	bi(3,1)
48	bi - Individual Ta dependence (slope) of IR pixels offset							
50								
58								
60								
68								
70								
78	bi(0,14)	bi(1,14)	bi(2,14)	bi(3,14)	bi(1,15)	bi(2,15)	bi(3,15)	
80	$\Delta\alpha(0,0)$	$\Delta\alpha(1,0)$	$\Delta\alpha(2,0)$	$\Delta\alpha(3,0)$	$\Delta\alpha(0,1)$	$\Delta\alpha(1,1)$	$\Delta\alpha(2,1)$	$\Delta\alpha(3,1)$
88	Individual sensitivity coefficients							
90								
98								
A0								
A8								
B0								
B8	$\Delta\alpha(0,14)$	$\Delta\alpha(1,14)$	$\Delta\alpha(2,14)$	$\Delta\alpha(3,14)$	$\Delta\alpha(0,15)$	$\Delta\alpha(1,15)$	$\Delta\alpha(2,15)$	$\Delta\alpha(3,15)$
C0	Heimann Sensor reserved							
C8								
D0								
D8	TGC	Scale offset	PTAT					
E0	common sensitivity coefficients				Emissivity			
E8	Heimann Sensor reserved							
F0							Config register	OSC trim
F8	Chip ID							

Detailed descriptions of some EEPROM addresses are depicted here after:

HEIMANN Sensor GmbH
 Grenzstr. 22
 D-01109 Dresden, Germany

Contact / Customer Support
 Phone 49 (0) 6123 60 50 30
 Fax 49 (0) 6123 60 50 39

Internet
www.heimannsensor.com
 e-mail: info@heimannsensor.com

Tab. 7: D7...D0 EEPROM cell meaning – Compensation pixel constants

D7	D6	D5	D4	D3	D2	D1	D0	EEPROM cell meaning
Heimann Sensor reserved								
acp - Compensation pixel individual offset								
bcp - Individual Ta dependence (slope) of the compensation pixel offset								
$\Delta\alpha_{cp_L}$ $\Delta\alpha_{cp_L}$ - Sensitivity coefficient of the compensation pixel								

Tab. 8: DF...D8 EEPROM cell meaning – PTAT constants

DF	DE	DD	DC	DB	DA	D9	D8	EEPROM cell meaning
TGC - Thermal Gradient Coefficient								
b_{i_scale} - Scaling Coefficient of slope of IR pixel offset								
V_{th_H} V_{th_L} - Vth0 of absolute temperature sensor								
KT1_H KT1_L - KT1 of absolute temperature sensor								
KT2_H KT2_L - KT2 of absolute temperature sensor								

Tab. 9: E7...E0 EEPROM cell meaning

E7	E6	E5	E4	E3	E2	E1	E0	EEPROM cell meaning
α_{0_H} α_{0_L} - Common sensitivity coefficient								
α_{0_scale} - Common sensitivity coefficient								
$\Delta\alpha_{scale}$ - Individual sensitivity scaling coefficient								
ϵ_H ϵ_L - Emissivity coefficient								
Heimann Sensor reserved								

Tab. 10: F7...F0 EEPROM cell meaning

F7	F6	F5	F4	F3	F2	F1	F0	EEPROM cell meaning
Heimann Sensor reserved								
CFG_H CFG_L - Config register value								
OSC_trim - Oscillator trimming value								

10.3 POR

The Power On Reset (POR) is connected to the Vdd supply. The on-chip POR circuit provides an active level of the POR signal when the Vdd voltage rises above approximately 0.5V and holds the entire HTPA 16x4 in reset until the Vdd is higher than 2.4V. The device will start approximately 5 ms after the POR release.

11 Communication protocol

The device supports Fast Mode Plus I²C FM+ (up to 1Mbps) and will work in slave mode only.

See full I²C specification at: http://www.nxp.com/documents/user_manual/UM10204.pdf

The communication is running through 2 digital pins: SCL and SDA. The master device is providing the clock signal SCL for the communication. The data line SDA is driven by either the master or the slave depending on the direction of the communication. A '0' is transmitted by pulling the SDA line to 'LOW' and a '1' by releasing it 'HIGH'. During the data transfer the SDA must remain stable while SCL is HIGH. Changes in SDA are allowed only when SCL is LOW.

11.1 Start / Stop condition

Each communication session is initiated by a START condition and ends with a STOP condition. A START condition is initiated by a HIGH to LOW transition of the SDA while a STOP is generated by a LOW to HIGH transition. Both changes must be done while the SCL is HIGH (see the figure)

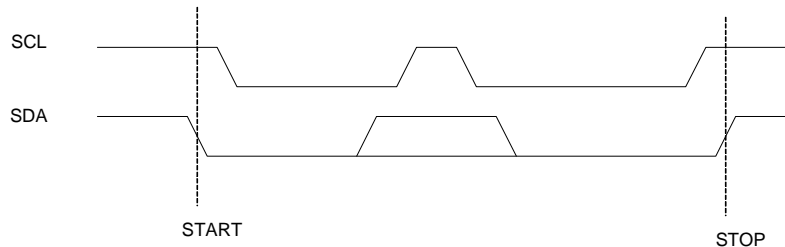


Figure 6: Start / Stop conditions of I²C

11.2 Device addressing

The master is addressing the slave device by sending an 7-bit slave address + R/W bit after the START condition. This bit indicates the direction of the transfer:

- Read (HIGH) means that the master will read the data from the slave
- Write (LOW) means that the master will send data to the slave

HTPA 16x4 is responding to 2 different slave addresses:

1	0	1	0	0	0	0	R/W
---	---	---	---	---	---	---	-----

for access to internal EEPROM

1	1	0	0	0	0	0	R/W
---	---	---	---	---	---	---	-----

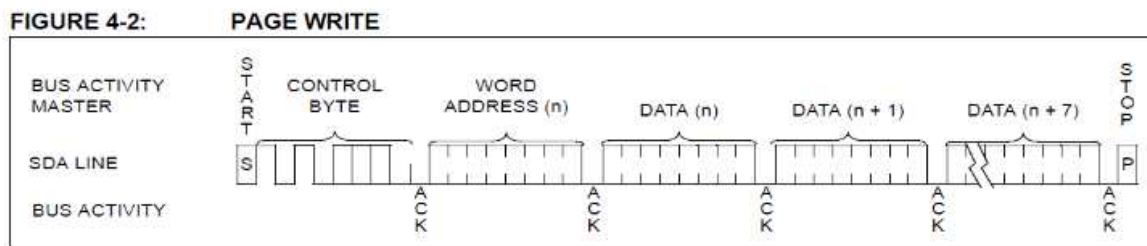
for access to IR array chip

11.3 Acknowledge

During the 9th clock following every byte transfer the transmitter releases the SDA line. The receiver acknowledges (ACK) receiving the byte by pulling SDA line to low or does not acknowledge (NoACK) by letting the SDA high.

11.4 EEPROM Communication

For further information see datasheet of 24AA02.



11.5 Sensor Communication

11.5.1 Measurement trigger

After the initialization procedure is done depending on the selected measurement mode (bit 6 in the configuration register) there are two possible routines:

- continuous mode
 - wait for valid data (depending on chosen refresh rates – IR and PTAT)
- Step mode
 - Send start measurement command

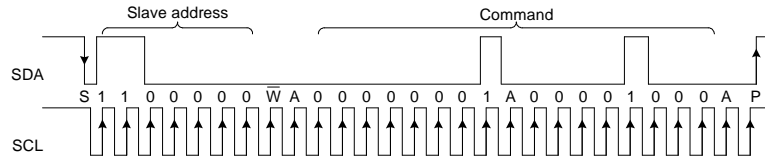


Figure 7: Start measurement command (SA = 0x60, command = 0x0801)

- Wait certain time
- Wait for the ready flag to be set

11.5.2 Read measurement data

IR data read

There are four options available for reading IR data:

- Whole frame read (Heimann Sensor recommends the whole frame read for maximum refresh rate)

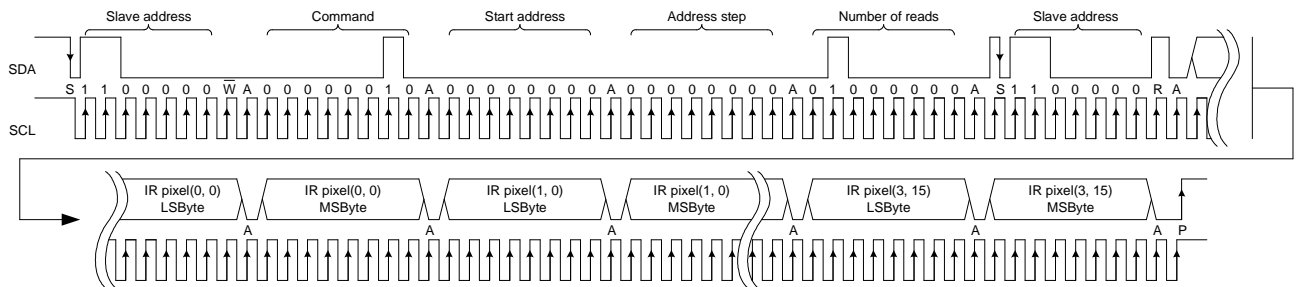


Figure 8 Whole frame (SA = 0x60, command = 0x02, Start address = 0x00, Address step = 0x01, Number of reads = 0x40) measurement result read

- Single column read

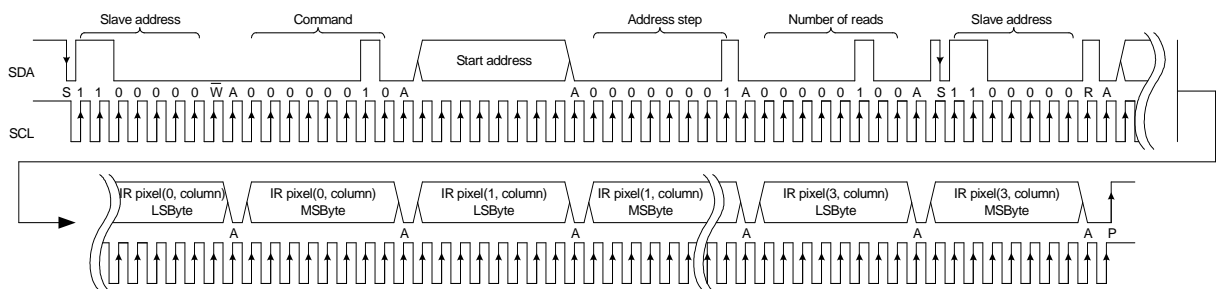


Figure 9 Single column (SA = 0x60, command = 0x02, Start address = 0x00...0x3C (step 0x04),

Address step = 0x01, Number of reads = 0x04) measurement result read

- Single line read

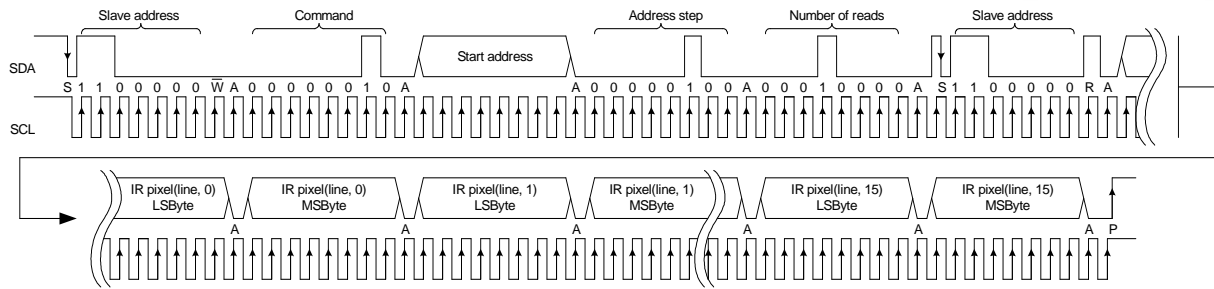


Figure 10 Single line (SA = 0x60, command = 0x02, Start address = 0x00...0x03 (step 0x01), Address step = 0x04, Number of reads = 0x10) measurement result read

- Single pixel read

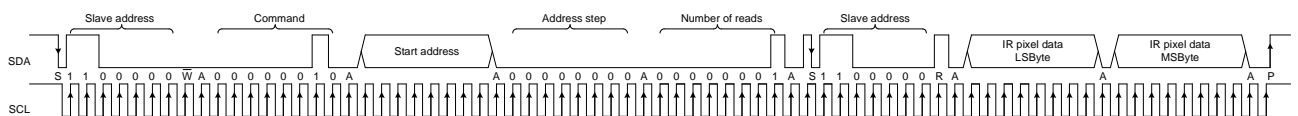


Figure 11 Single pixel (SA = 0x60, command = 0x02, Start address = 0x00...0x3F, Address step = 0x00, Number of reads = 0x01) measurement result read

PTATdata read

Absolute ambient temperature data of the device itself (package temperature) can be read by using following command:

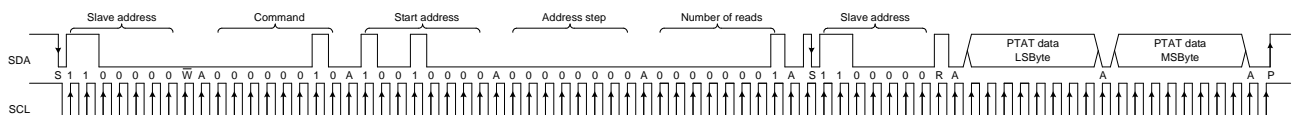


Figure 12: PTAT (SA = 0x60, command = 0x02, Start address = 0x90, Address step = 0x00, Number of reads = 0x01) measurement result read

$$PTAT_data = \{ PTAT_data_MSbyte : PTAT_data_LSbyte \}$$

Compensation pixel read

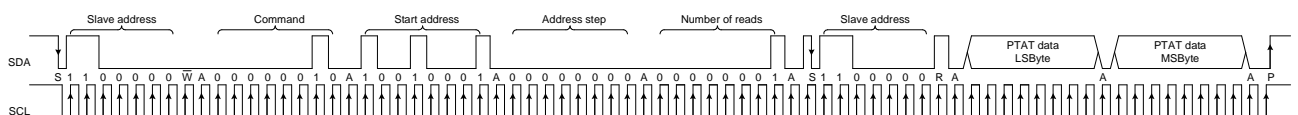


Figure 13 Compensation pixel (SA = 0x60, command = 0x02, Start address = 0x91, Address step = 0x00, Number of reads = 0x01) measurement result read

The 16bit data for each pixel is:

$$IR(i, j)_data = \{ IR(i, j)_data_MSbyte : IR(i, j)_data_LSbyte \}$$

12 Device modes

The device can operate in following modes:

- Normal mode
- Step mode
- Power saving mode

12.1 Normal mode

In this mode the measurements are constantly running. Depending on the selected refresh rate Fps in ConfReg, the data for IR pixels and Ta will be updated in the RAM each 1/Fps seconds. In this mode the external microcontroller has full access to the internal registers and memories of the device (both for HTPA 16x4 and EEPROM chip).

12.2 Step mode

This mode is foreseen for single measurements triggered by the external device (microcontroller). Entering this mode is possible by writing the appropriate code in ConfReg. A measurement is triggered by sending the command StartMeas. On detecting the command, the HTPA 16x4 will start the measurements immediately after the I²C session is finished (STOP condition detected). The measurement time is 1/Fps and can be selected in 2 possible ways:

- The already programmed Fps parameter in ConfReg can be used and the measurement (integration) time will take 1/Fps
- The Fps parameter can be an argument in the StartMeas command.

Once the Step mode is initiated the access to the internal registers of the device will be disabled. If the master sends a command to the HTPA 16x4 while the measurement in step mode is ongoing, a NoAckn will be received after the slave address is transmitted.

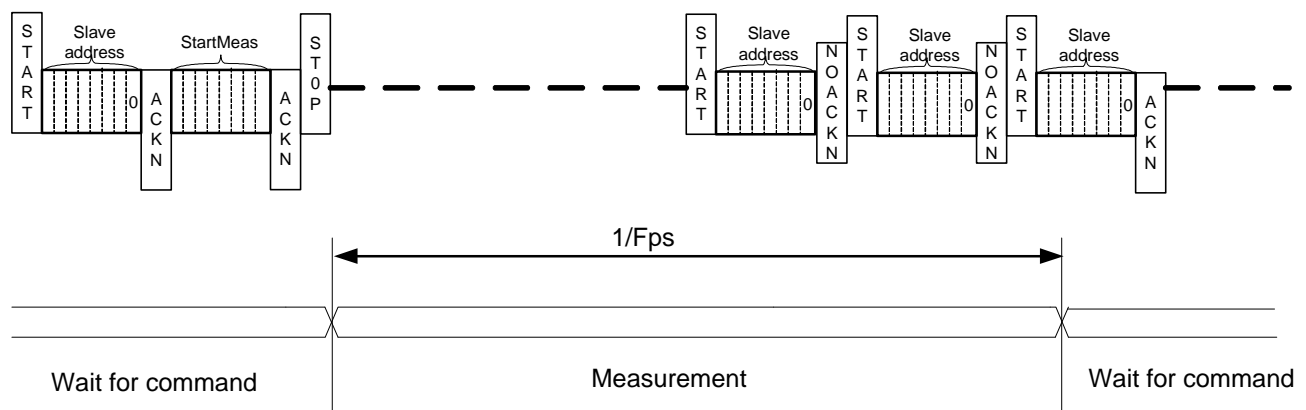


Figure 14: Execution of Start_Meas in Step mode

12.3 Power saving mode

In this mode the device will be completely shutdown and the current consumption will be minimized to less than 5uA. Entering this mode is initiated by sending the command 'Sleep'. Upon receiving it the device will shutdown all electronics, including the internal oscillator. The chip will monitor the I²C line. Each START condition will wake up the

oscillator and the chip will receive and evaluate the slave address. If the address is 0x60 (address programmed in HTPA 16x4) the device will evaluate the whole command and will execute it. If not, the oscillator will be switched off again.

13 Integrated Sensor for gradient compensation

The IR sensor readings and accuracy are very sensitive to any temperature gradients over the package. Any temperature difference between the cold junction of thermopile and (part of) the package, 'seen' by the IR sensor will create an error signal. Such a problem is not very severe for the applications where absolute measurement is not required, because in this case it is important to cancel the distortion.

However for the applications where the picture must be converted to temperatures, seen by the different pixels, such a gradient will introduce huge error in the measurement. The problem will be even more severe if there is a variation of the gradient (unfortunately the most common case, because the gradient comes from power dissipation of electronics on the same pcb, which varies with environmental conditions).

The HTPA16x4 supports one extra IR channel containing amplifier, ADC and digital filter. The input of this chain is connected to bond pads. An additional IR sensor can be placed in the same package and connected to these bond pads. If this sensor is optically 'blinded' (seeing only package, not outside) its output can be used to compensate the error readings of the main array.

Heimann Sensor has developed and implemented this approach successfully. The experience shows that the readings of additional sensor allow reduction of the gradient's error by factor of 10.

14 Temperature calculation flow

The following algorithm shows an example of a program execution flow to achieve object as well as ambient temperatures.

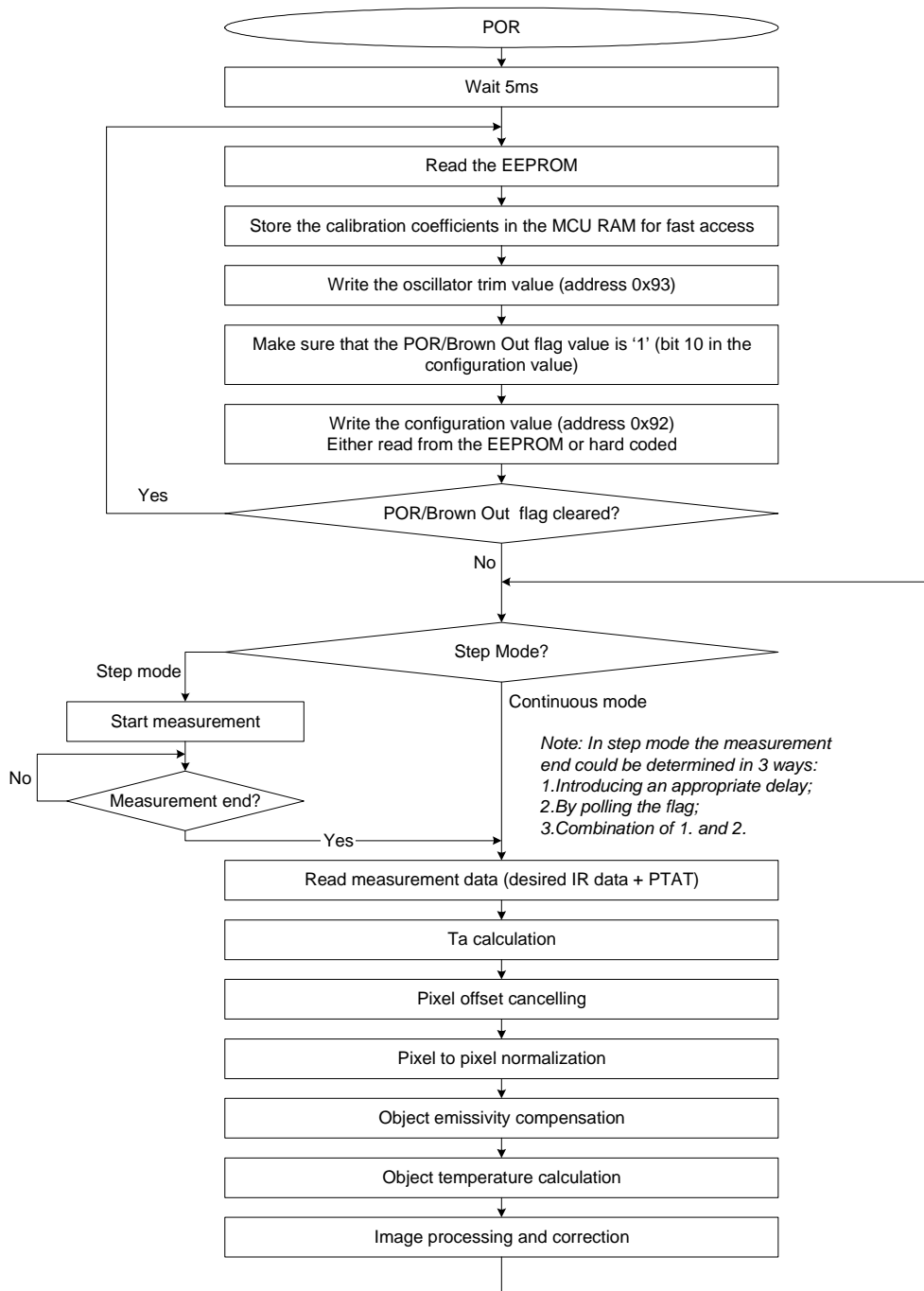


Figure 15: temperature calculation flow

14.1 Initialization

After the POR is released the external CPU must execute an initialization procedure. This procedure must start at least 5ms after POR release.

- Read the whole EEPROM (see Figure 16). For maximum speed performance Heimann Sensor recommends that the whole calibration data is stored into the client MCU RAM. However it is possible to read the calibration data from the EEPROM only when needed. This will result in increased time for temperature calculation i.e. low refresh rate.

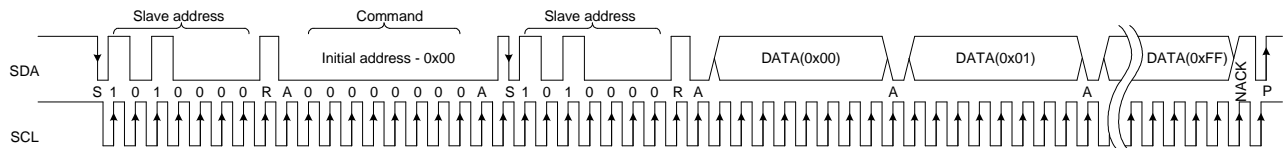


Figure 16 Whole EEPROM dump (SA = 0x50)

- Store the EEPROM content into customer MCU RAM (see above paragraph for optional information)
- Write the oscillator trimming value (extracted from EEPROM content at address 0xF7) into the corresponding register (0x93).

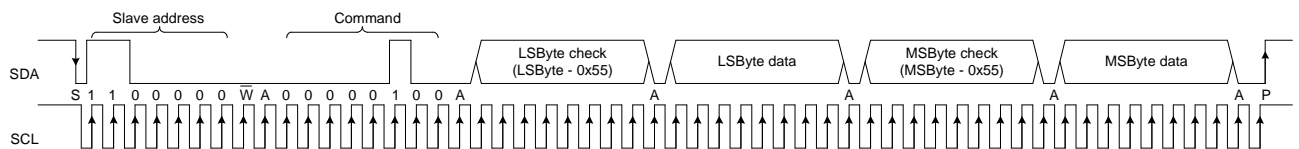


Figure 17 Write oscillator trimming (SA = 0x60, command = 0x04)

- Write device configuration value. In EEPROM addresses (0xF5 and 0xF6) Heimann Sensor provides a typical value of the configuration register (0x740E). So it is up to the user to copy that value or hardcode a new value to be loaded into the configuration register. If the EEPROM value is to be used the 16 bits are combined as follows:

For instance if EEPROM 0xF5 = 0x0E and 0xF6 = 0x74, the Configuration register value is:

$$\text{Configuration_register_value} = \{0xF6 : 0xF5\} = 0x740E$$

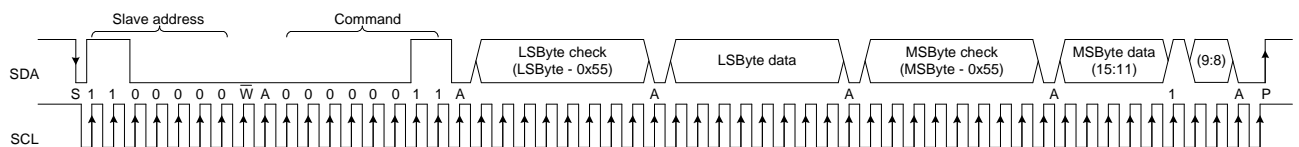


Figure 18 Write configuration register (SA = 0x60, command = 0x03)

NOTE: The customer must ensure that the bit 10 (POR or Brown-out flag) in Configuration register is set to "1" by the MD. Furthermore this bit must be checked regularly and if it is cleared that means that the device has been reset and the initialization procedure must be redone.

Opcode – 0x03.

This command is used to set the configuration register (16bits) value – all configuration settings.

Simple data check is introduced. The two data bytes are sent two times: first time with the true data minus 0x55 and second time – the true data. The chip does the addition with 0x55 internally and checks the second received byte. Only if the addition results match with the received data for the two bytes, the configuration register is updated.

The command communication is illustrated below:

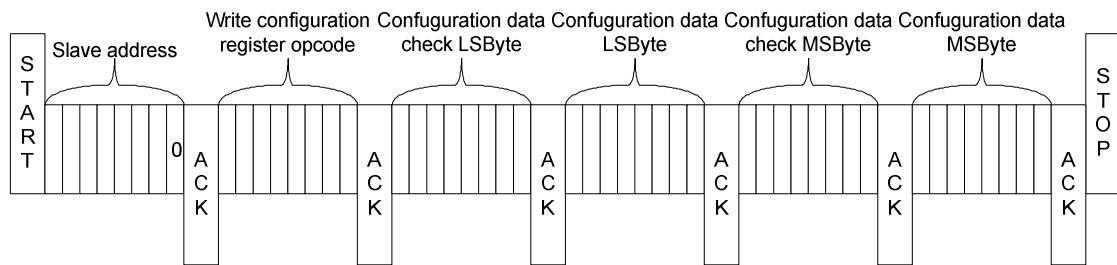


Figure 19: Write configuration register command

The default configuration is:

- IR refresh rate = 1Hz
- Ta refresh rate = 0.5Hz
- Continuous measurement mode
- Normal mode (no sleep)
- I²C FM+ mode (max bit transfer rates up to 1000 kbit/s) enabled
- ADC low reference enabled

15 Calculation Considerations

15.1 Calculation of absolute temperature of the die (Ta)

The output signal of the IR sensor is relative to its cold junction temperature. That is why we need to know the absolute temperature of the die in order to be able to calculate the object temperature 'seen' by each pixel.

The Ta can be calculated using the formula:

$$Ta = \frac{-K_{T1} + \sqrt{K_{T1}^2 - 4K_{T2}[V_{TH}(25) - PTAT_data]}}{2K_{T2}} + 25, [^{\circ}C]$$

Constants $V_{TH}(25)$, K_{T1} and K_{T2} are stored in EEPROM at following addresses as two's complement values:

Tab. 11: absolute temperature values storage adress

EEPROM address	Cell name	Stored as	Parameter
0xDA	V_{TH_L}	2's complement	V_{TH0} of absolute temperature sensor
0xDB	V_{TH_H}		
0xDC	K_{T1_L}	2's complement	K_{T1} of absolute temperature sensor
0xDD	K_{T1_H}		
0xDE	K_{T2_L}	2's complement	K_{T2} of absolute temperature sensor
0xDF	K_{T2_H}		

$$V_{TH}(25) = 256.V_{TH_H} + V_{TH_L}$$

$$K_{T1} = \frac{256.K_{T1_H} + K_{T1_L}}{2^{10}}$$

$$K_{T2} = \frac{256.K_{T2_H} + K_{T2_L}}{2^{20}}$$

15.2 Example for Ta calculations

Let's assume that the values in EEPROM are as follows:

Tab. 12: examples of cell values written in the EEPROM

EEPROM address	Cell name	Cell values (hex)
0xDA	V_{TH_L}	0x78
0xDB	V_{TH_H}	0x1A
0xDC	K_{T1_L}	0x33
0xDD	K_{T1_H}	0x5B
0xDE	K_{T2_L}	0xCC
0xDF	K_{T2_H}	0xED

$$V_{TH}(25) = 256.V_{TH_H} + V_{TH_L} = 256.26 + 120 = 6776, \text{ decimal value}$$

$$\text{Sign check } 6776 < 32767 \rightarrow V_{TH}(25) = 6776$$

$$K_{T1} = \frac{256.K_{T1_H} + K_{T1_L}}{2^{10}} = \frac{256.91 + 51}{1024} = \frac{23347}{1024}$$

$$\text{Sign check } 23347 < 32767 \rightarrow K_{T1} = \frac{23347}{1024} \approx 22.7998$$

$$K_{T_2} = \frac{256 \cdot K_{T_2-H} + K_{T_2-L}}{2^{20}} = \frac{256 \cdot 237 + 204}{1048576} = \frac{60876}{1048576}$$

$$\text{Sign check } 60876 > 32767 \rightarrow K_{T_2} = \frac{60876 - 65536}{1048576} = \frac{-4660}{1048576} \approx -0.0044441$$

Let's assume that the input data is:

$$PTAT_data = 0x1AC0 = 6848 \text{ dec}$$

Thus the ambient temperature is:

$$T_a = \frac{-K_{T_1} + \sqrt{K_{T_1}^2 - 4K_{T_2}[V_{TH}(25) - PTAT_data]}}{2K_{T_2}}$$

$$T_a \approx \frac{-22.7998 + \sqrt{519.8309 - 4(-0.0044441)[6776 - 6848]}}{-0.0088882} + 25$$

$$T_a \approx \frac{-22.7998 + \sqrt{519.8309 + 0.0177764(-72)}}{-0.0088882} + 25$$

$$T_a \approx \frac{-22.7998 + \sqrt{518.551}}{-0.0088882} + 25 \approx \frac{-22.7998 + 22.7717}{-0.0088882} + 25 \approx 3.16 + 25$$

$$T_a \approx 28.16^\circ\text{C}$$

15.3 Calculation of T_o

Following formula is used to calculate the temperature seen by specific pixel in the matrix:

$$T_{O(i,j)} = \sqrt[4]{\frac{V_{IR(i,j)_COMPENSATED}}{\alpha_{(i,j)}} + (T_a + 273.15)^4} - 273.15, [^\circ\text{C}]$$

where:

$V_{IR(i,j)_COMPENSATED}$ is the parasitic free IR compensated signal

$\alpha_{(i,j)}$ is a individual pixel sensitivity coefficient stored in EEPROM

T_a is ambient temperature calculated in 9.4.2

15.4 Calculating VIR(I,j)_COMPENSATED

1. Offset compensation

$$V_{IR(i,j)_OFF_COMP} = V_{IR(i,j)} - \left(ai_{(i,j)} + \frac{bi_{(i,j)}}{2^{b_{i_scale}}} (T_a - T_{a_0}) \right)$$

Where:

$V_{IR(i,j)}$ is a individual pixel IR_data readout (RAM read)

$ai_{(i,j)}$ is a individual pixel offset stored in EEPROM as two's complement value

$bi_{(i,j)}$ is a Individual Ta dependence (slope) of IR pixels offset stored in EEPROM as two's complements value

b_{i_SCALE} is a scaling coefficient for slope of IR pixels offset and is stored in the EEPROM as unsigned value

T_a is ambient temperature calculated in 15.1

$T_{a_0} = 25^\circ C$ is a constant

NOTE: This applies to the compensation pixel as well (a_{CP} and b_{CP} while b_{i_SCALE} is the same)

2. Thermal Gradient Compensation (TGC)

$$V_{IR(i,j)_TGC_COMP} = V_{IR(i,j)_OFF_COMP} - \frac{TGC}{32} \cdot V_{IR_CP_OFF_COMP}$$

Where:

$V_{IR_CP_OFF_COMP}$ is offset compensated IR signal of the thermal gradient compensation pixel

3. Emissivity compensation

$$V_{IR(i,j)_COMPENSATED} = \frac{V_{IR(i,j)_TGC_COMP}}{\epsilon}$$

Where:

ϵ is emissivity coefficient. The scaled value is stored into EEPROM as unsigned value

$$\epsilon = \frac{256 \cdot \epsilon_H + \epsilon_L}{65535}$$

15.5 Calculating $\alpha(i,j)$

$$\alpha_{(i,j)} = \frac{(256 \cdot \alpha_{0_H} + \alpha_{0_L})}{2^{\alpha_{0_SCALE}}} + \frac{\Delta\alpha_{(i,j)}}{2^{\Delta\alpha_{SCALE}}}$$

Where:

α_{0_H} , α_{0_L} , $\Delta\alpha_{(i,j)}$, α_{0_SCALE} and $\Delta\alpha_{SCALE}$ are stored in the EEPROM as unsigned values

And parameters necessary to calculate To are stored into EEPROM at following addresses:

Tab 13: parameter used in calculation

EEPROM address	Cell name	Stored as	Parameter
0x00...0x3F	$a_{i(i,j)}$	2's complement	IR pixel individual offset coefficient
0x40...0x7F	$b_{i(i,j)}$	2's complement	Individual Ta dependence (slope) of IR pixels offset
0x80...0xBF	$\Delta\alpha_{(i,j)}$	unsigned	Individual sensitivity coefficient
0xD4	a_{CP}	2's complement	Compensation pixels individual offset coefficients
0xD5	b_{CP}	2's complement	Individual Ta dependence (slope) of the compensation pixel offset
0xD6	α_{CP_L}	unsigned	Sensitivity coefficient of the compensation pixel
0xD7	α_{CP_H}		
0xD8	TGC	2's complement	Thermal gradient coefficient
0xD9	b_{i_SCALE}	unsigned	Scaling coefficient for slope of IR pixels offset
0xE0	α_{0_L}	unsigned	Common sensitivity coefficient of IR pixels
0xE1	α_{0_H}		
0xE2	α_{0_SCALE}	unsigned	Scaling coefficient for common sensitivity
0xE3	$\Delta\alpha_{SCALE}$	unsigned	Scaling coefficient for individual sensitivity
0xE4	ε_L	unsigned	Emissivity
0xE5	ε_H		

15.6 Example for To calculations

Let's assume that we have following EEPROM data for pixel $i=2, j=8$:

Tab 14: example of values while calculating object temperature

EEPROM address	Cell name	Stored as	Cell values (hex)
0x22	$a_{i(2,8)}$	2's complement	0xD6
0x62	$b_{i(2,8)}$	2's complement	0xC1
0xA2	$\Delta\alpha_{(2,8)}$	unsigned	0x8F
0xD4	a_{CP}	2's complement	0xD0
0xD5	b_{CP}	2's complement	0xCA
0xD6	α_{CP_L}	unsigned	0x00
0xD7	α_{CP_H}	unsigned	0x00
0xD8	TGC	2's complement	0x23
0xD9	b_{i_SCALE}	unsigned	0x08
0xE0	α_{0_L}	unsigned	0xE4
0xE1	α_{0_H}	unsigned	0xD5
0xE2	α_{0_SCALE}	unsigned	0x2A
0xE3	$\Delta\alpha_{SCALE}$	unsigned	0x21
0xE4	ε_L	unsigned	0x32
0xE5	ε_H	unsigned	0xF3

Let's assume that we have the following input data:

$$V_{CP} = 0xFFD8 = 65496, \text{ decimal value}$$

$$\text{Sign check } 65496 > 32767 \rightarrow V_{CP} = 65496 - 65536 = -40$$

$$V_{IR(2,8)} = 0x0090 = 144, \text{ decimal value}$$

$$\text{Sign check } 144 < 32767 \rightarrow V_{IR(2,8)} = 144$$

$$Ta \approx 28.16^\circ C \text{ (as calculated in 15.1)}$$

Reference routine for To computation:

$$a_{CP} = 0xD0 = 208, \text{ decimal value}$$

$$\text{Sign check } 208 > 127 \rightarrow a_{CP} = 208 - 256 = -48$$

$$b_{CP} = 0xCA = 202, \text{ decimal value}$$

$$\text{Sign check } 202 > 127 \rightarrow b_{CP} = 202 - 256 = -54$$

$$V_{CP_OFF_COMP} = V_{CP} - \left(a_{CP} + \frac{b_{CP}}{2^{b_{i_scale}}} (T_a - T_{a_0}) \right) = -40 - \left(-48 + \frac{-54}{2^8} (28.16 - 25) \right) \approx 8.67$$

$$ai_{(2,8)} = 0xD6 = 214, \text{ decimal value}$$

$$\text{Sign check } 214 > 127 \rightarrow ai_{(2,8)} = 214 - 256 = -42$$

$$bi_{(2,8)} = 0xC1 = 193, \text{ decimal value}$$

$$\text{Sign check } 193 > 127 \rightarrow bi_{(2,8)} = 193 - 256 = -63$$

$$V_{IR(2,8)_OFF_COMP} = V_{IR(2,8)} - \left(ai_{(2,8)} + \frac{bi_{(2,8)}}{2^{b_{i_scale}}} (T_a - T_{a_0}) \right)$$

$$= 144 - \left(-42 + \frac{-63}{2^8} (28.16 - 25) \right) \approx 186.78$$

$$TGC = 0x23 = 35, \text{ decimal value}$$

$$\text{Sign check } 35 < 127 \rightarrow TGC = 35$$

$$V_{IR(i,j)_TGC_COMP} = V_{IR(i,j)_OFF_COMP} - \frac{TGC}{32} \cdot V_{IR_CP_OFF_COMP} = 186.78 - \frac{35}{32} \cdot 8.67 \approx 177.30$$

$$\varepsilon = \frac{256 \cdot \varepsilon_H + \varepsilon_L}{65535} = \frac{256 \cdot 243 + 50}{65535} = \frac{62258}{65535} \approx 0.949996$$

$$V_{IR(i,j)_COMPENSATED} = \frac{V_{IR(i,j)_TGC_COMP}}{\varepsilon} = \frac{177.30}{0.949996} \approx 186.63$$

$$\alpha_{(2,8)} = \frac{(256 \cdot \alpha_{0_H} + \alpha_{0_L})}{2^{\alpha_{0_SCALE}}} + \frac{\Delta \alpha_{(2,8)}}{2^{\Delta \alpha_{SCALE}}} = \frac{(256 \cdot 213 + 228)}{2^{42}} + \frac{143}{2^{33}} \approx 2.9097 \cdot 10^{-8}$$

$$T_{O(2,8)} = \sqrt[4]{\frac{V_{IR(2,8)_COMPENSATED}}{\alpha_{(2,8)}} + (T_a + 273.15)^4} - 273.15$$

$$T_{O(2,8)} = \sqrt[4]{\frac{186.63}{2.9097 \cdot 10^{-8}} + (28.16 + 273.15)^4} - 273.15 \approx 74.79^\circ\text{C}$$

16 Performance Graphs

16.1 Calculated Field Of View (FOV)

The FOV must be separated in this case in two directions, because the HTPA 16 x4 has 16 sensors in the width and 4 in the height.

Tab. 15: calculated field of view (FOV)

parameter			unit
	16 sensors	4 sensors	
Field of View L7.0	28.22	7.19	degree
Field of View L5.5	35.49	9.15	degree
Field of View L3.6	52.11	13.94	degree

17 Applications Information

17.1 Use of the HTPA 16x4 in I²C configuration

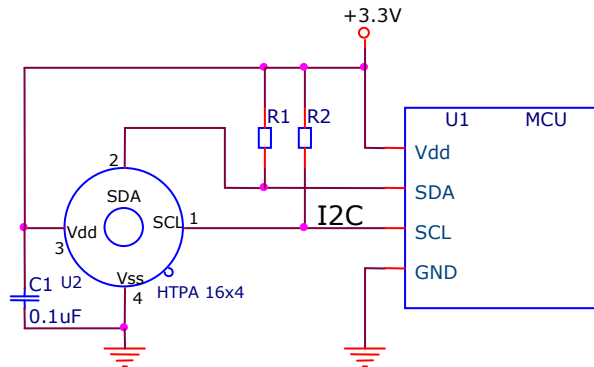


Figure 20: wire connection I²C

Figure 20 shows the connection of a HTPA 16x4 to an I²C with 3.3V power supply. The HTPA 16x4 has diode clamps SDA/SCL to Vdd so it is necessary to provide HTPA 16x4 with power in order not to load the I²C lines.

18 Application Comments

Significant **contamination** at the optical input side (sensor filter) might cause unknown additional filtering/distortion of the optical signal and therefore result in unspecified errors.

IR sensors are inherently susceptible to errors caused by **thermal gradients** from the front lens to the sensor die. This phenomenon is called "**heat shock**". When the front cap or lens emits more heat than the sensor die, the sensor receives more heat than it can compensate itself from its own ambient heat. Therefore the sensor is "shielded" and is not able to measure in specified ranges. In spite of the careful design of the HTPA 16x4 it is recommended not to subject the HTPA 16x4 to heat transfer and especially transient conditions. Front cap, front lens and sensor die should have the same ambient temperature.

The HTPA 16x4 is designed and calibrated to operate as a non contact thermometer in settled conditions. Using the thermometer in a very different way will lead to unknown results.

Capacitive loading on a I²C can degrade the communication. Some improvement is possible with use of current sources compared to resistors in pull-up circuitry. Further improvement is possible with specialized commercially available bus accelerators. With the HTPA 16x4 additional improvement is possible by increasing the pull-up current (decreasing the pull-up resistor values). Input levels for I²C compatible mode have higher overall tolerance than the I²C specification, but the output low level is rather low even with the high-power I²C specification for pull-up currents. Another option might be to go for a slower communication (clock speed), as the HTPA 16x4 implements Schmidt

triggers on its inputs in I²C compatible mode and is therefore not really sensitive to rise time of the bus (it is more likely the rise time to be an issue than the fall time, as far as the I²C systems are open drain with pull-up).

Power dissipation within the package may affect performance in two ways: by heating the "ambient" sensitive element significantly beyond the actual ambient temperature, as well as by causing gradients over the package that will inherently cause thermal gradient over the cap.

Power supply decoupling capacitor is needed as with most integrated circuits. HTPA 16x4 is a mixed-signal device with sensors, small signal analog part, digital part and I/O circuitry. In order to keep the noise low power supply switching noise needs to be decoupled. High noise from external circuitry can also affect noise performance of the device. In many applications a 100nF SMD ceramic capacitor close to the Vdd and Vss pins would be a good choice. It should be noted that not only the trace to the Vdd pin needs to be short, but also the one to the Vss pin. Using HTPA 16x4 with short pins improves the effect of the power supply decoupling.

19 Initialization

After POR is released the chip executes an initialization procedure, this procedure starts typ. 16ms after POR release and requires only a few ms. In that time the device will read its configuration from the reserved part of the EEPROM and will load it in the registers of the HTPA16x4. The settings that are loaded are:

- Oscillator trimming data
- Bias trimming data
- Regulator control
- ConfReg settings

During that time the HTPA16x4 will work as Master I²C device for the EEPROM chip. Note that this will not affect the external I²C bus, i.e. the information transmitted between HTPA16x4 and EEPROM chip will not be visible externally.

During the initialization, the HTPA16x4 will block any access through external I2C line and will not respond to any commands. This means that a NoACKN will be received by the external MCU if the HTPA16x4 or EEPROM chip is addressed.

20 Liability

The contents of this document are subject to change without notice. Changes or modifications at the product which haven't influence to the performance and/or quality of the device haven't to be announced to the customers in advance. Customers are requested to consult with Heimann Sensor representatives before the use of Heimann Sensor products in special applications where failure or abnormal operation may directly affect human lives or cause physical injury or property damage. The company or their representatives will not be responsible for damage arising from such use without prior approval.

21 Glossar

ADC	A nalog to D igital C onverter
DSP	D igital S ignal P rocessing
EMC	E lectro- M agnetic C ompatibility
ESD	E lectro- S tatic D ischarge
FOV	F ield O f V iew
FpS	F rames p er S econd (data refresh rate)
HFO	H igh F requency O scillator (RC type)
I ² C	I nter- I ntegrated C ircuit communication protocol
IR	I nfra R ed
IR_data	I nfra R ed data (raw data from ADC proportional to IR energy received from the sensor)
MD	M aster D evice
NA	N ot A pplicable
POR	P ower O n R eset
PTAT	P roportional T o A bsolute T emperature sensor (package temperature)
SCL	S erial C lock
SD	S lave D evice
SDA	S erial D ata
Ta	A mbient T emperature
TGC	T emperature G radient C oefficient
TBD	T o B e D efined
To	O bject T emperature, 'seen' from IR sensor